

# Mikrotomografia przemysłowa – praktyczne zastosowanie w kontroli jakości i rozwoju produktów





## SPEKTRUM PROMIENIOWANIA ELEKTROMAGNETYCZNEGO

Przenika atmosferę  
ziemską?



Typ  
promieniowania  
Długość fali (m)

radiowe  
 $10^3$

mikrofale  
 $10^{-2}$

podczerwień  
 $10^{-5}$

światło  
widzialne  
 $0.5 \times 10^{-6}$

ultrafiolet  
 $10^{-8}$

rentgenowskie  
 $10^{-10}$

gamma  
 $10^{-12}$

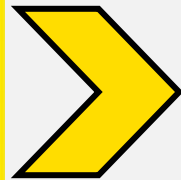
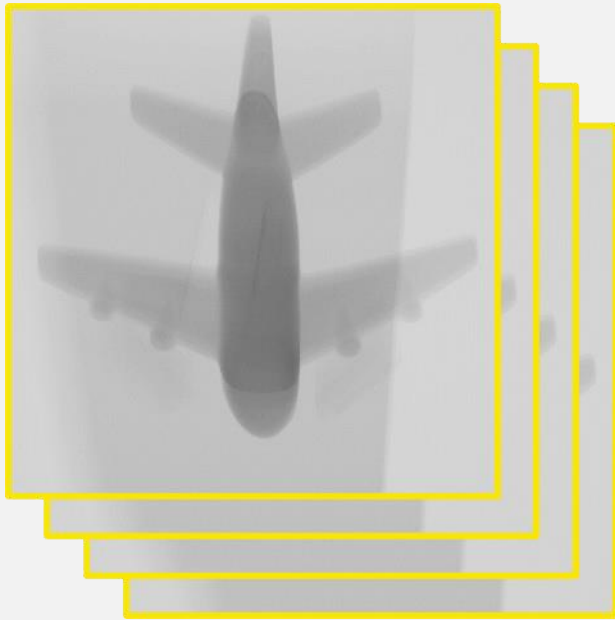
# RZUCANIE CIENIA



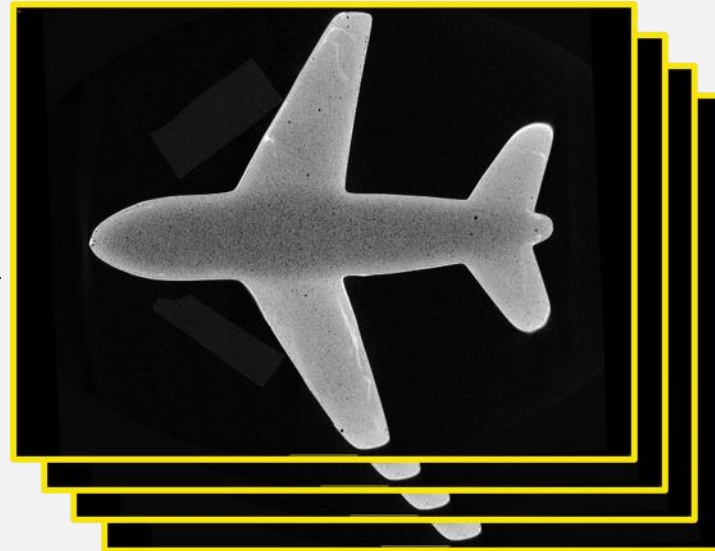
[marketing@smart-solutions.pl](mailto:marketing@smart-solutions.pl)

[www.smart-solutions.pl](http://www.smart-solutions.pl)

## AKWIZYCJA



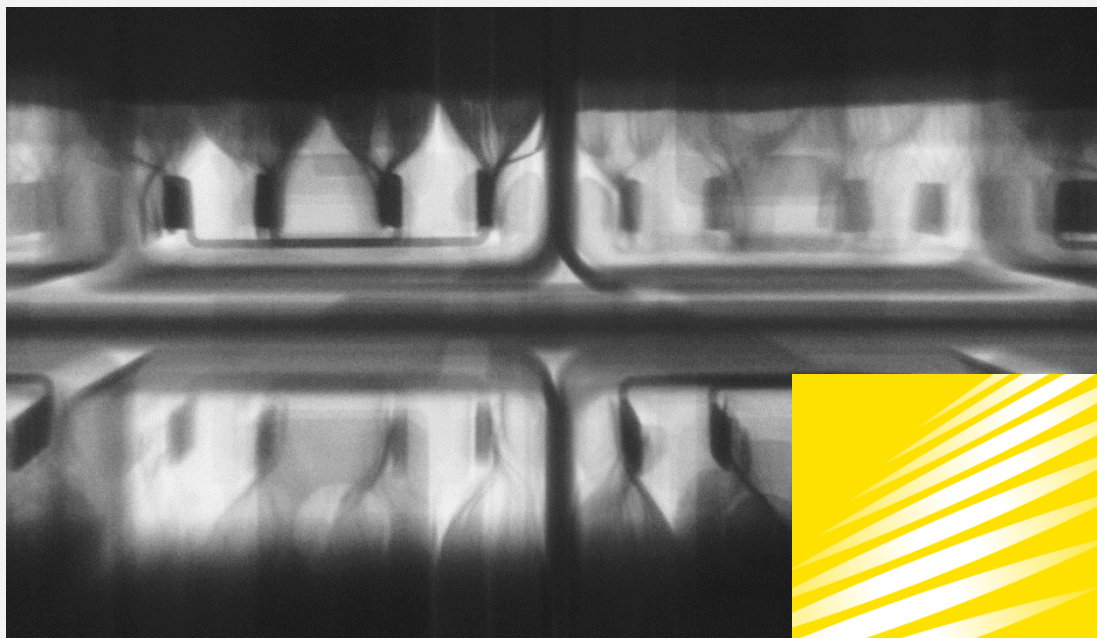
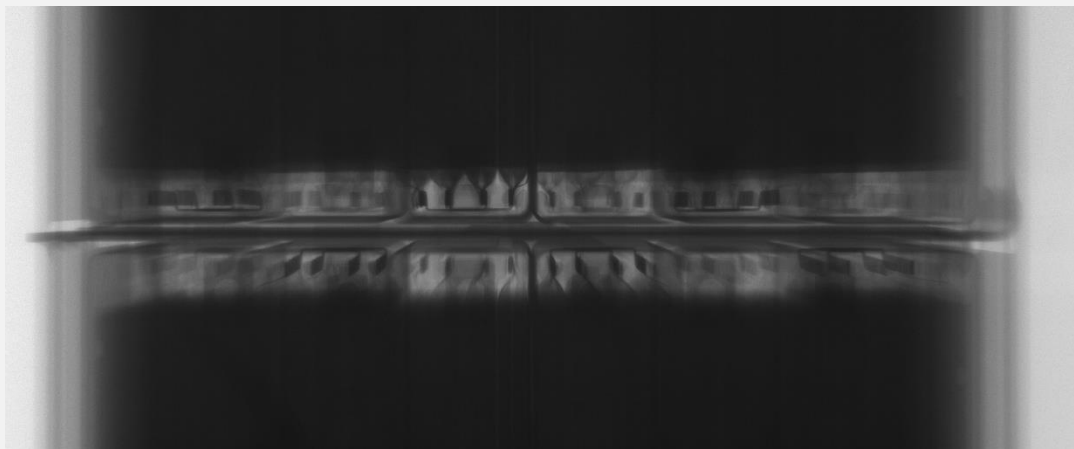
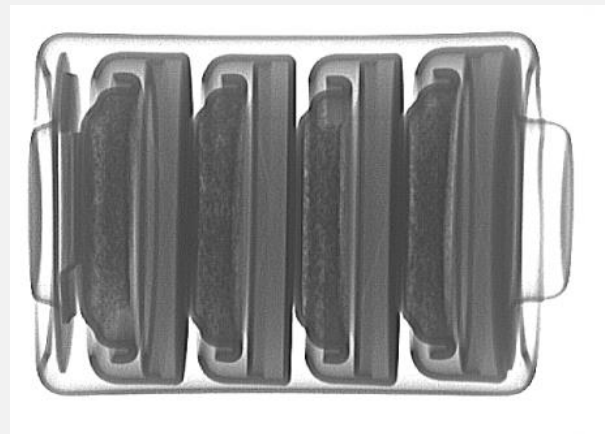
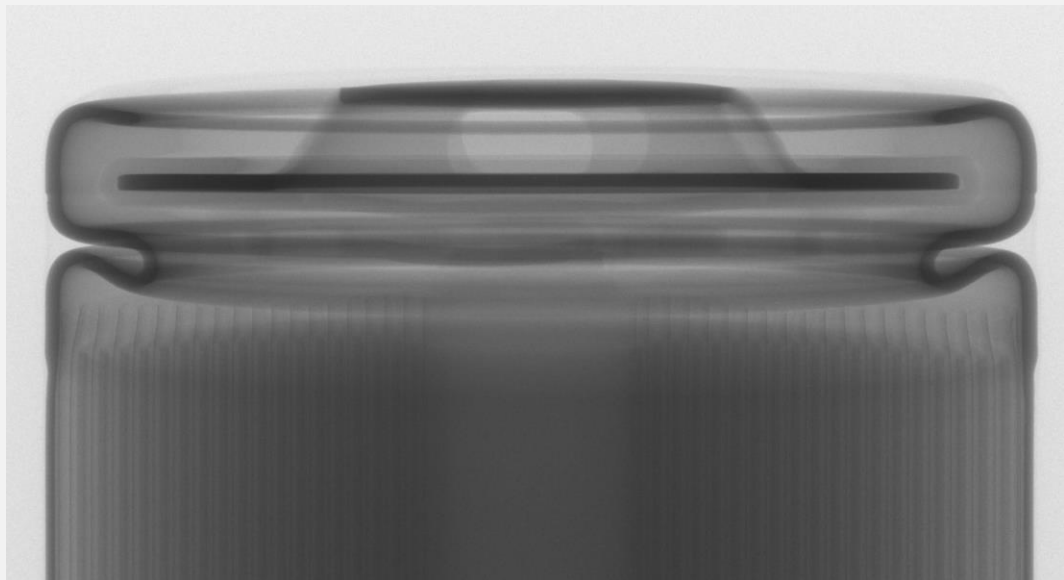
## REKONSTRUKCJA

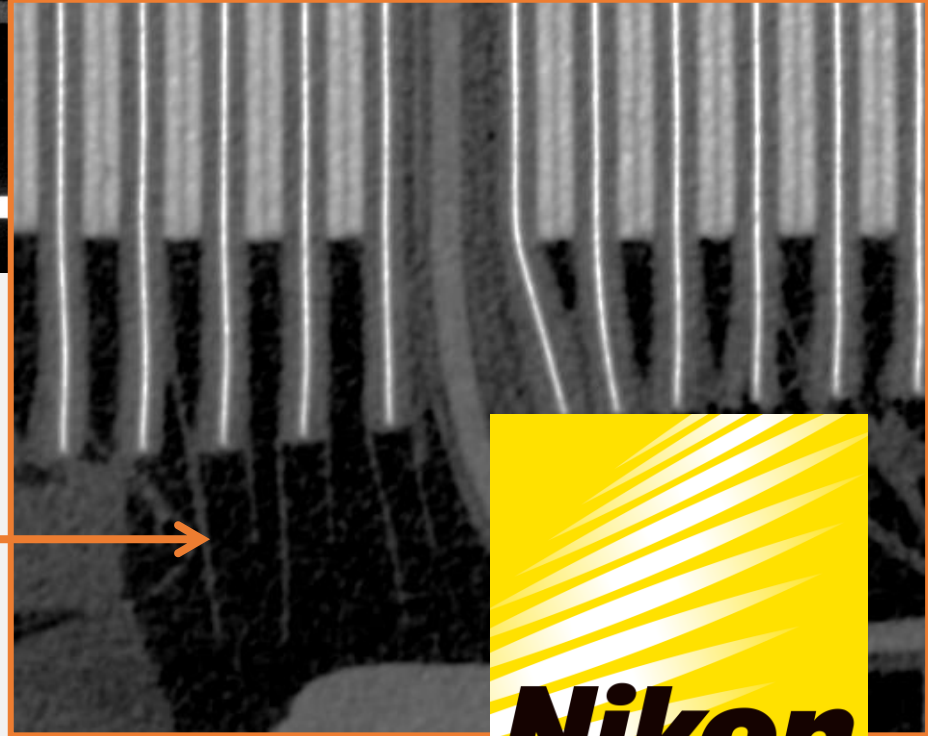
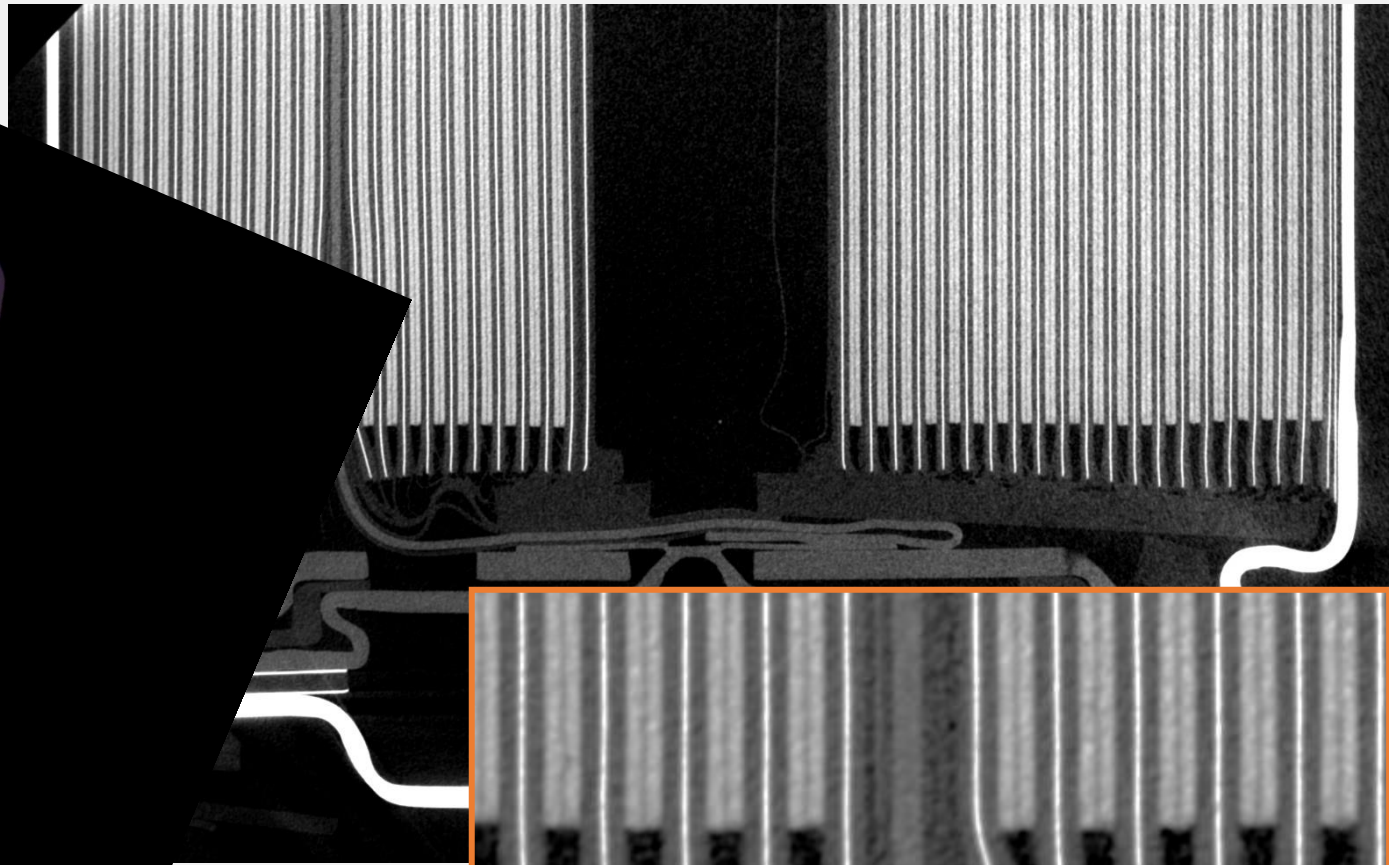
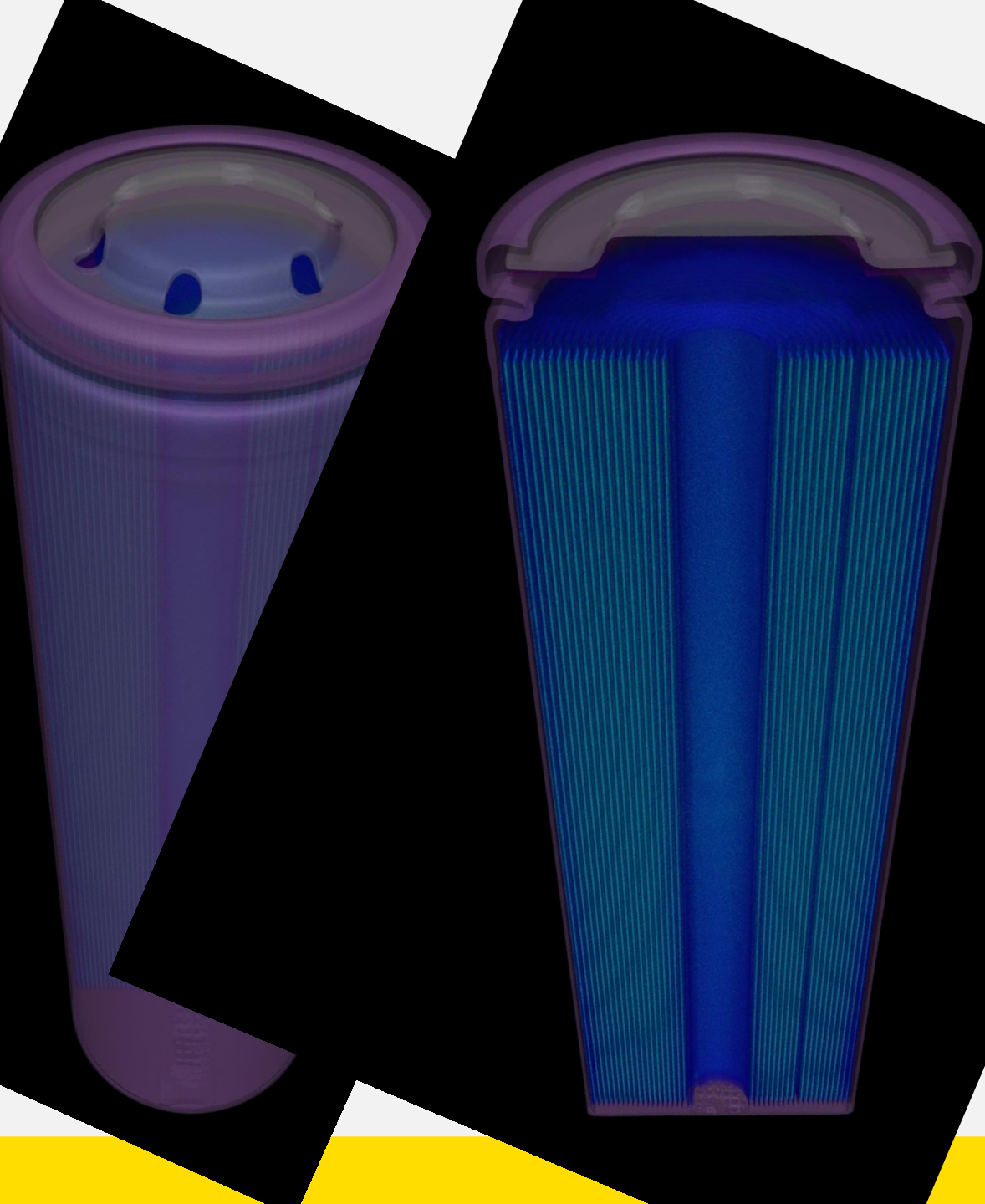


## MODEL 3D



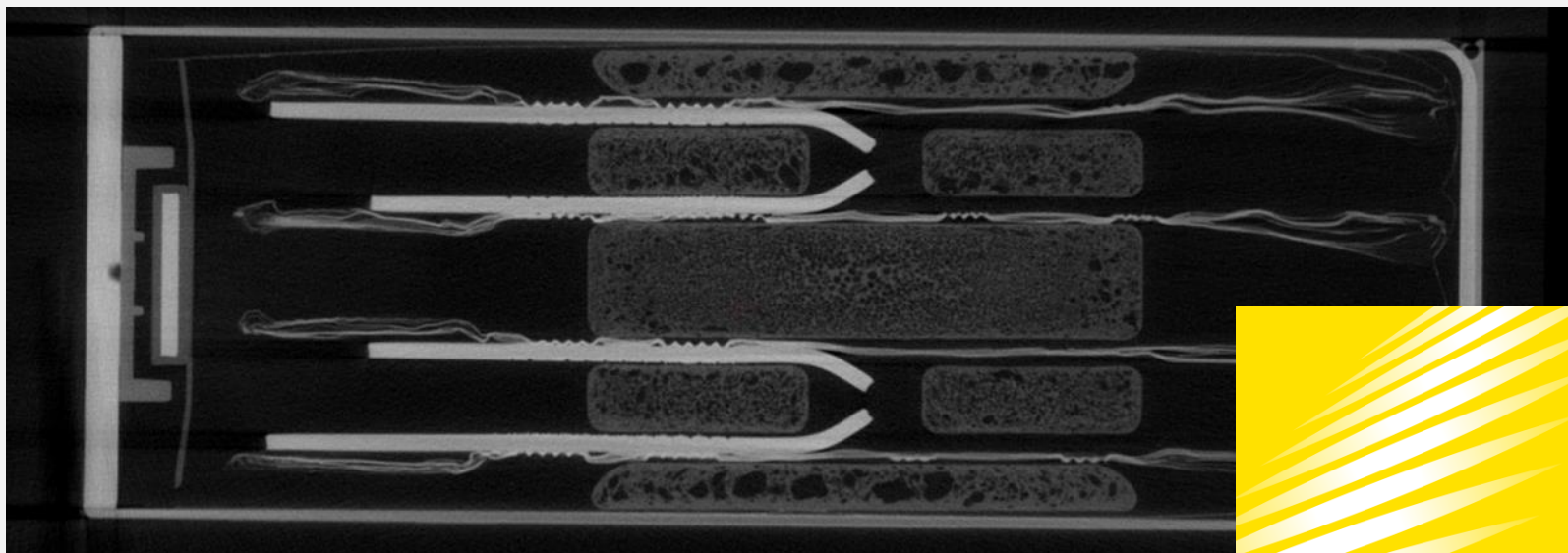
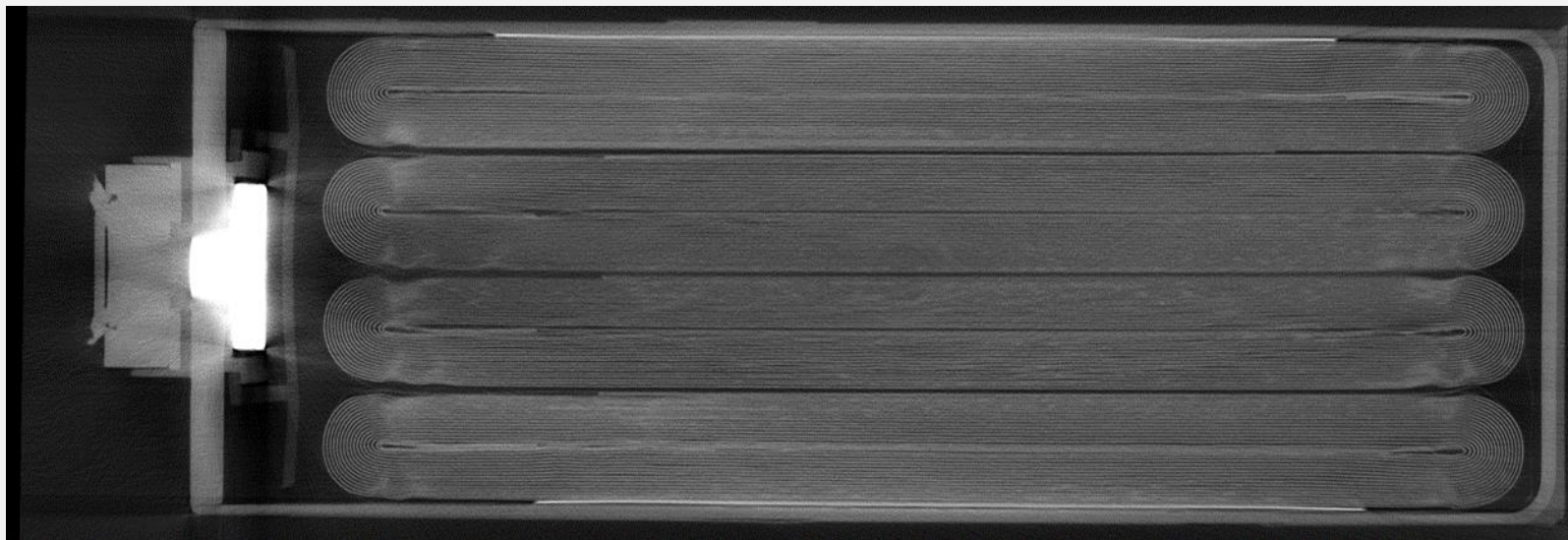
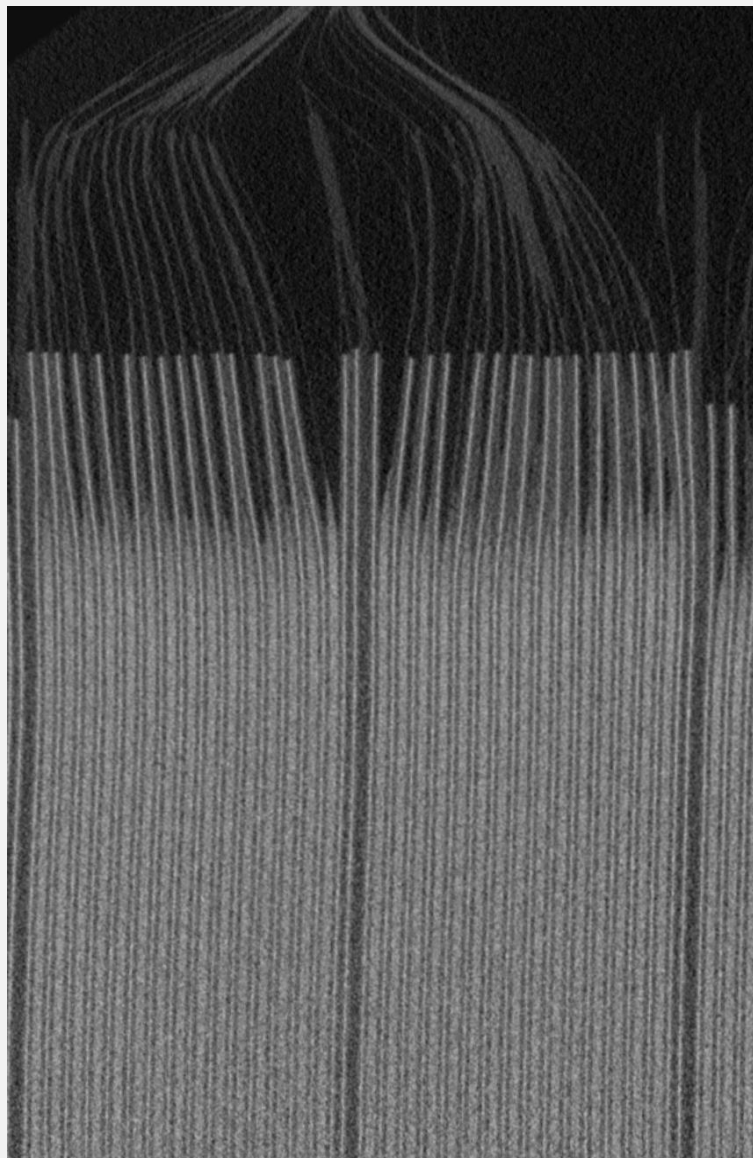
# BATERIE





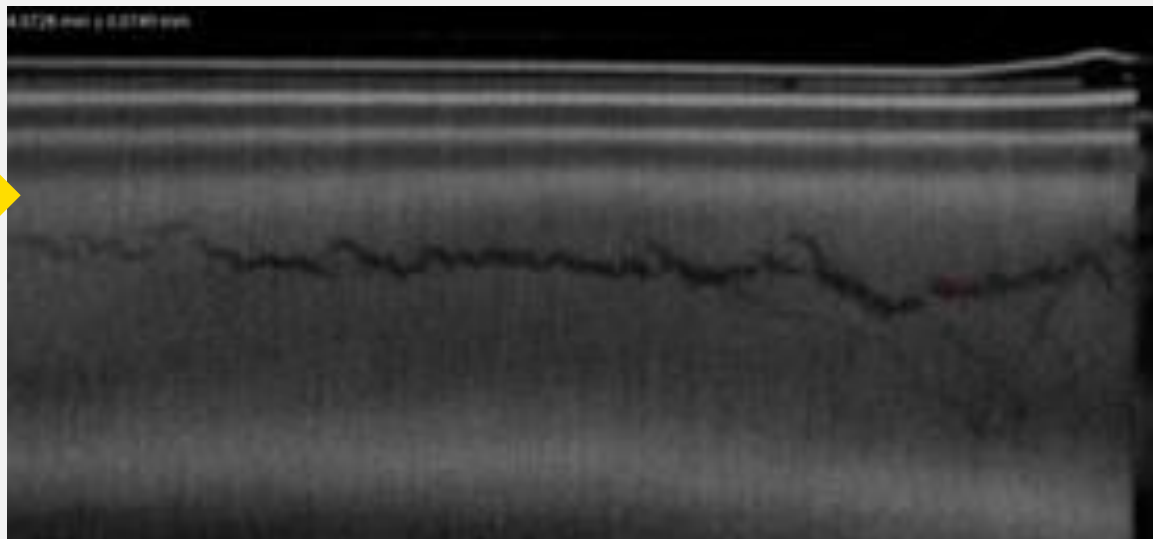
Separator



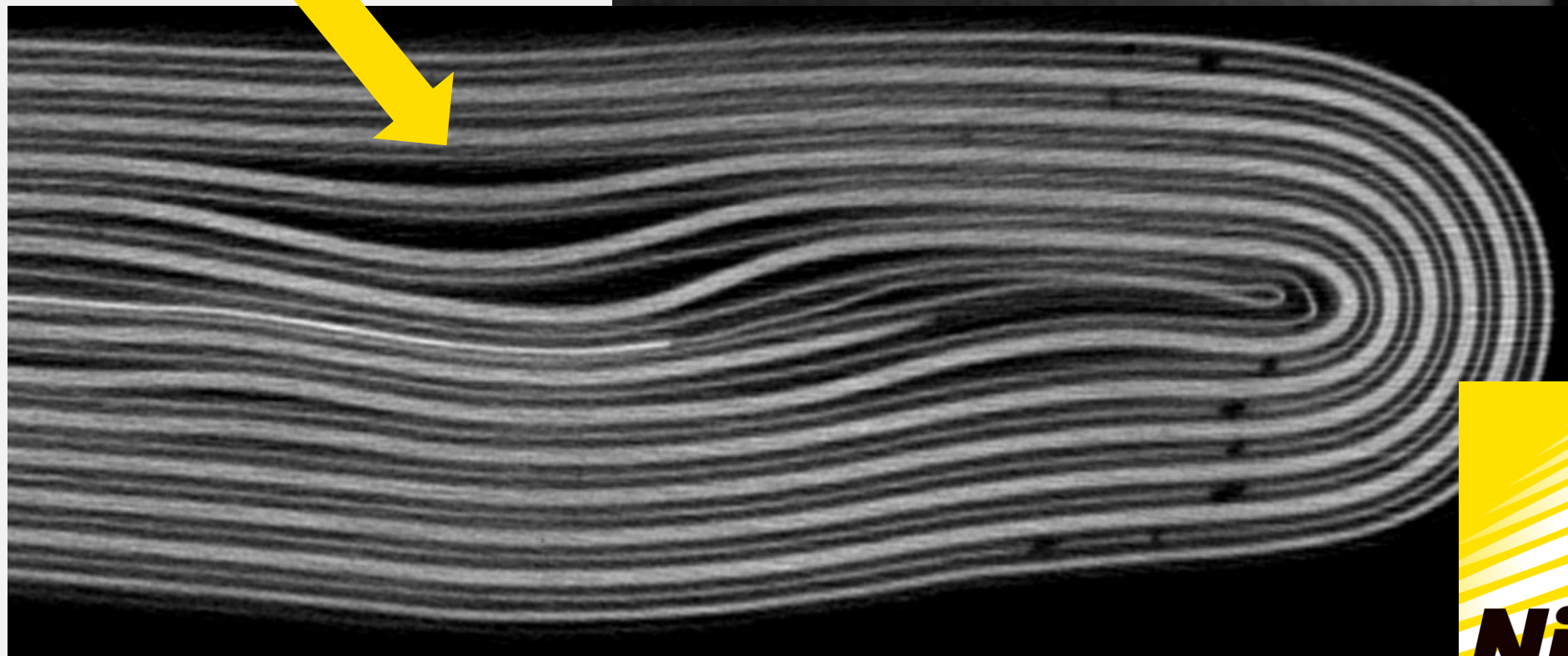




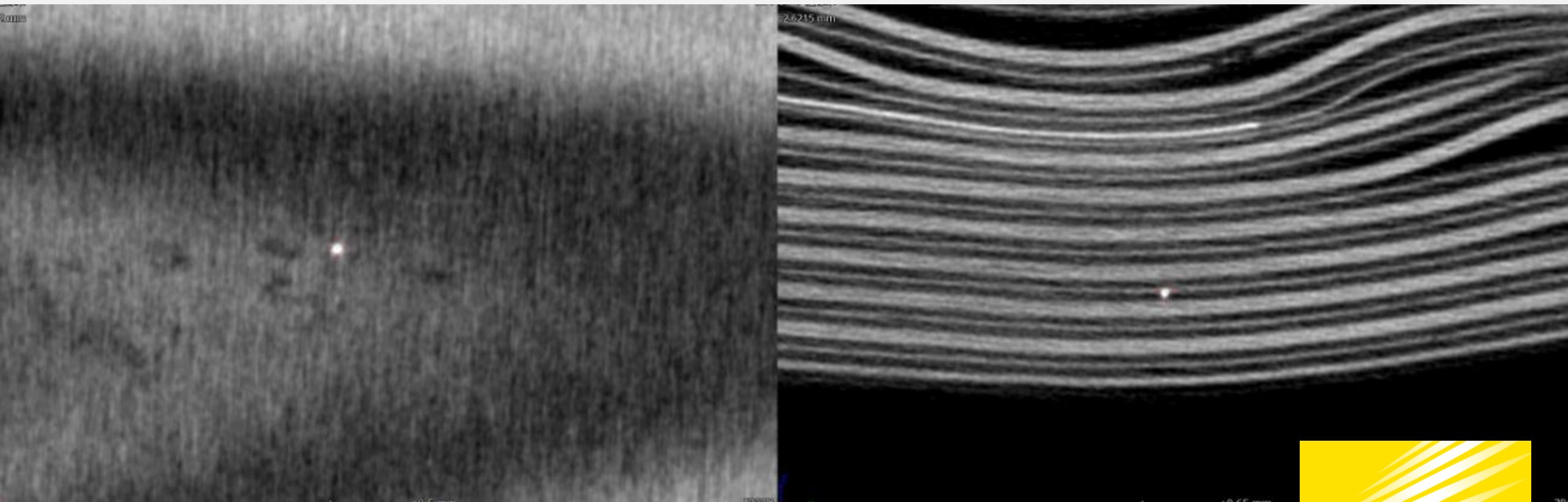
PĘKNIĘCIE

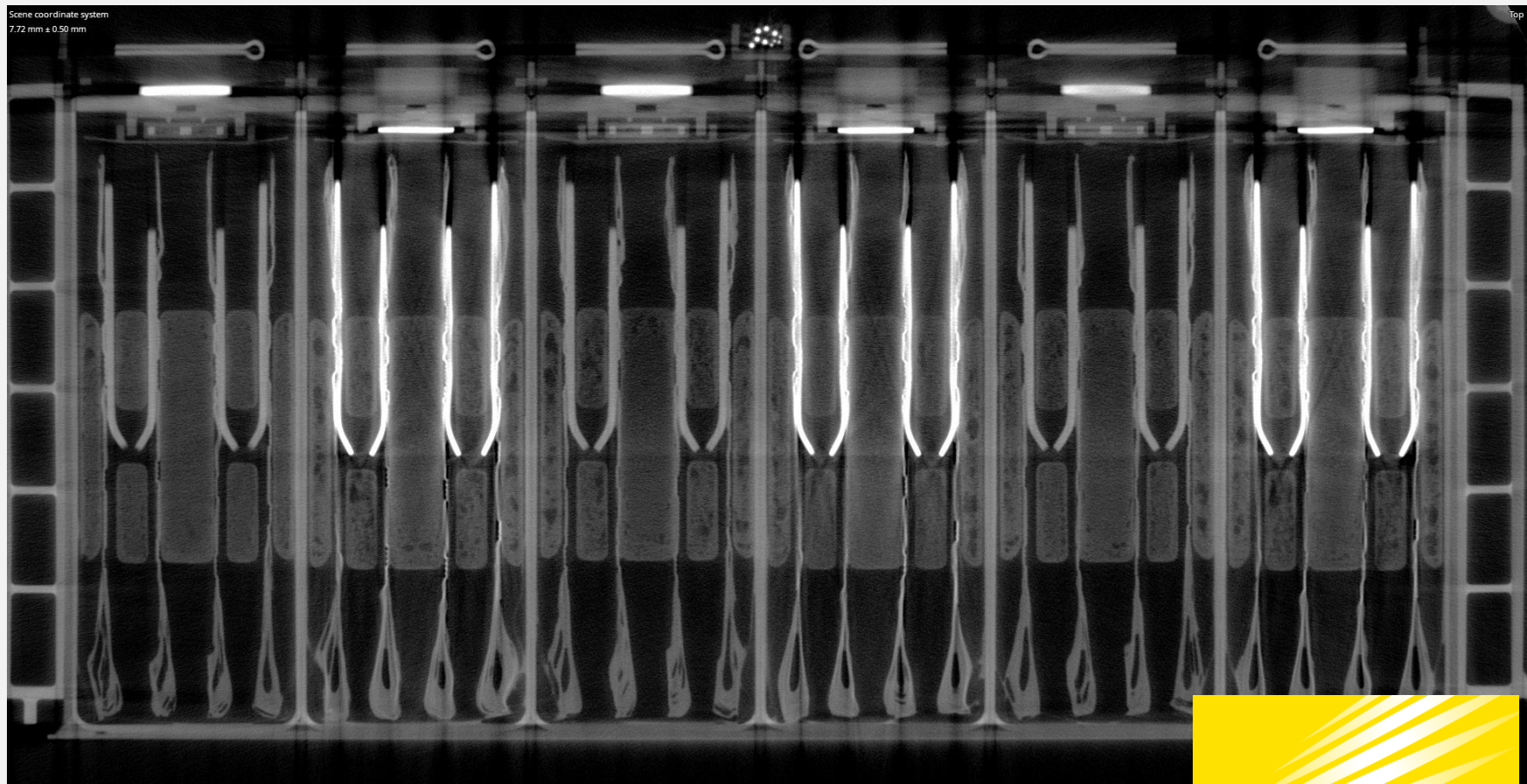
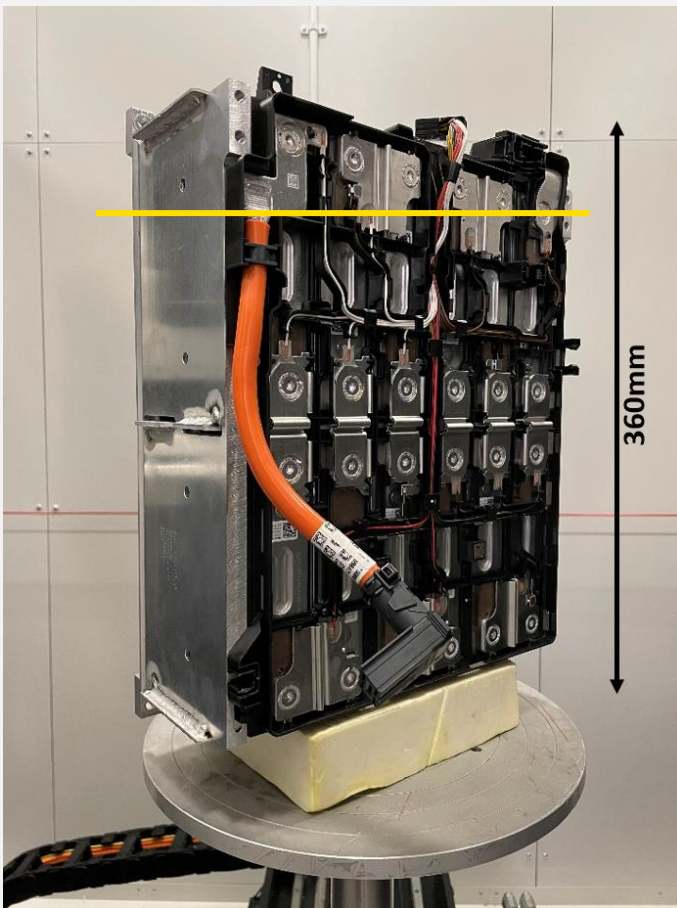


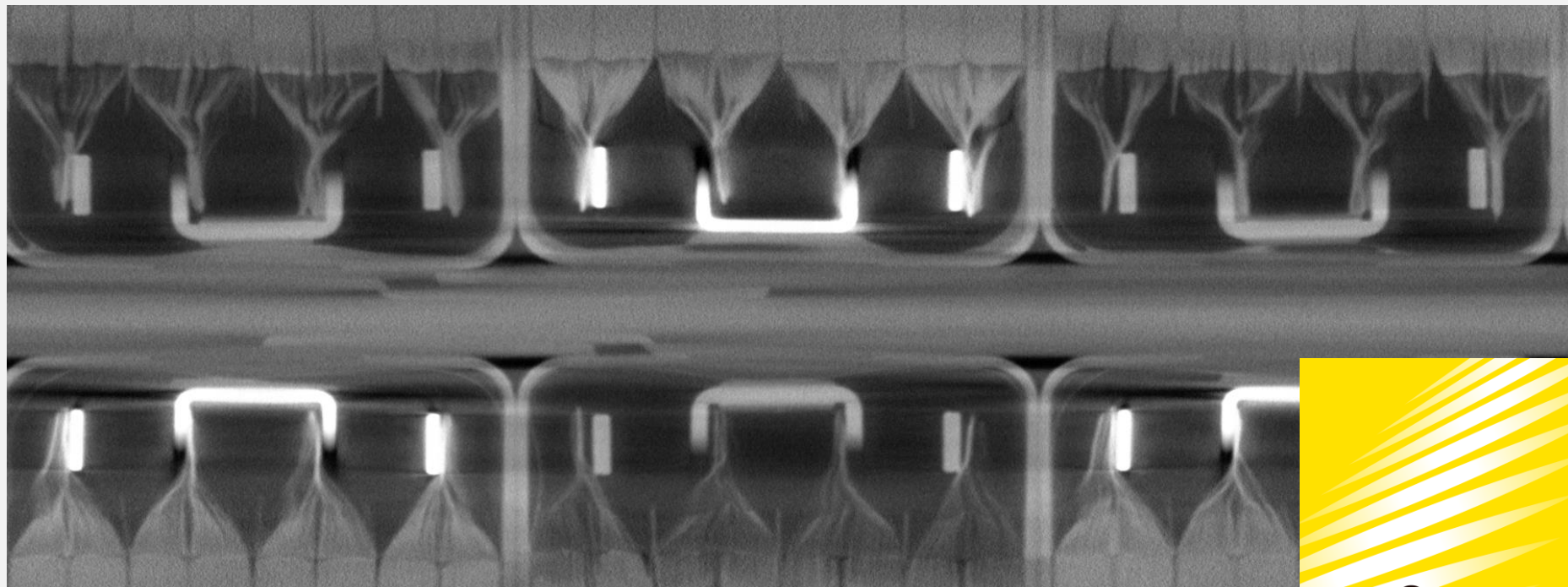
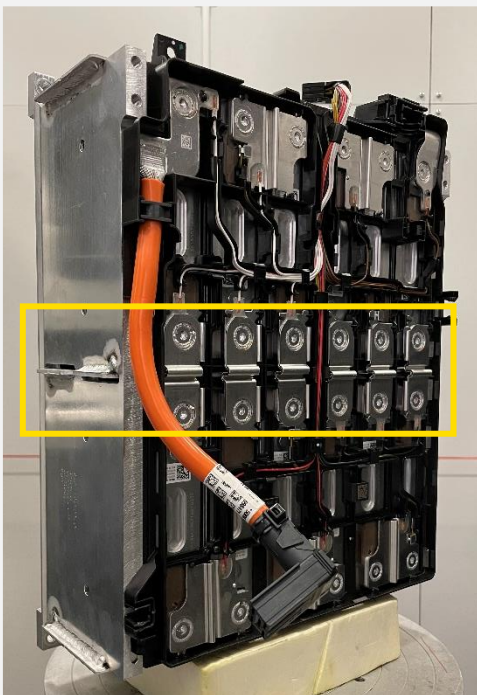
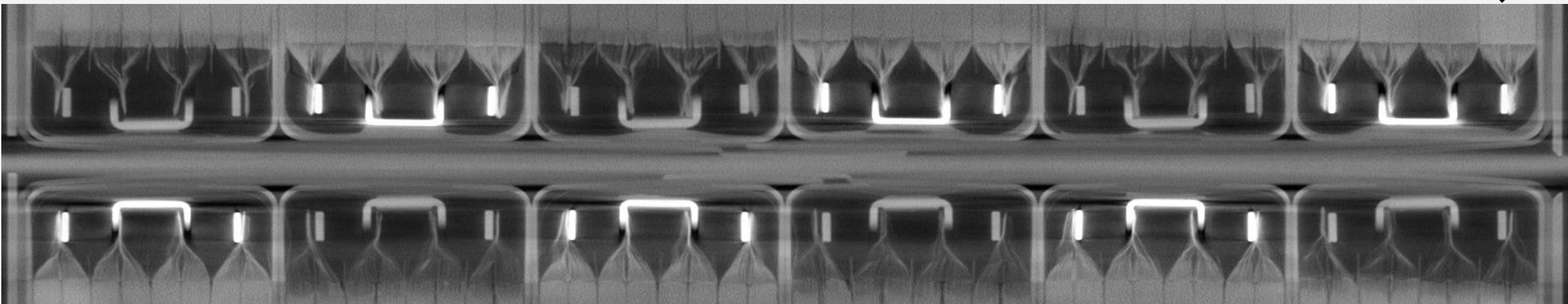
DELAMINACJA



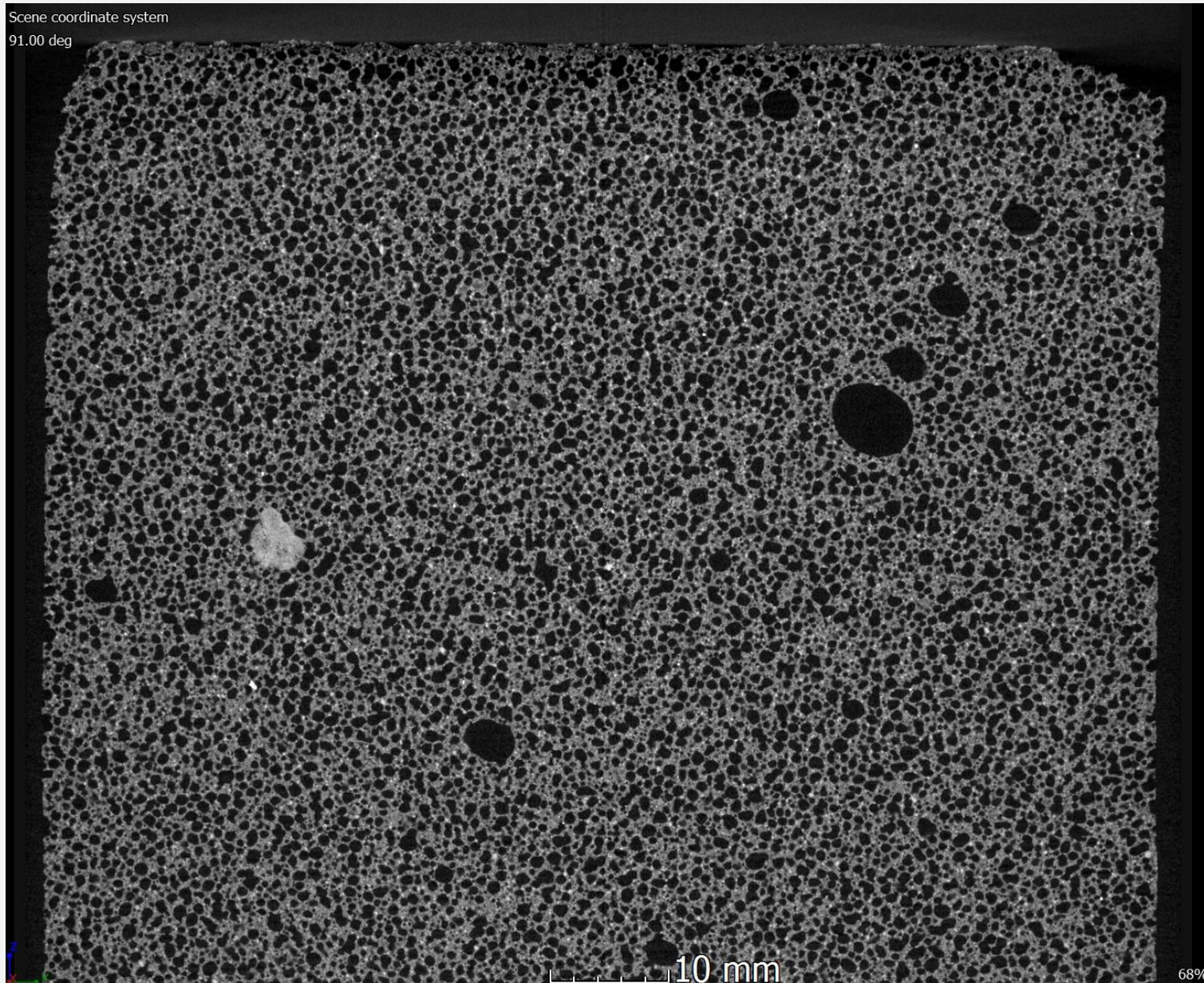
# CIAŁO OBCE



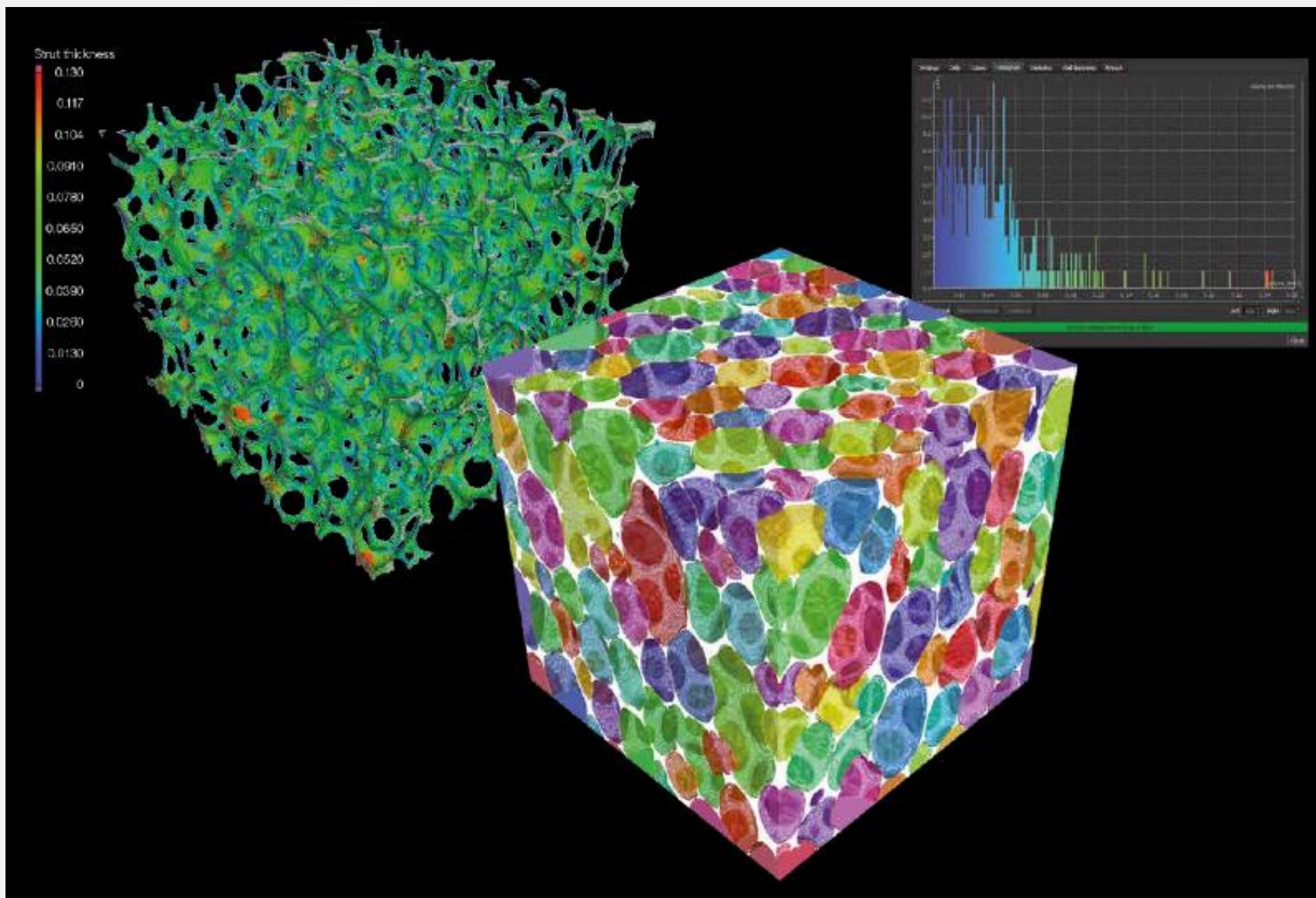




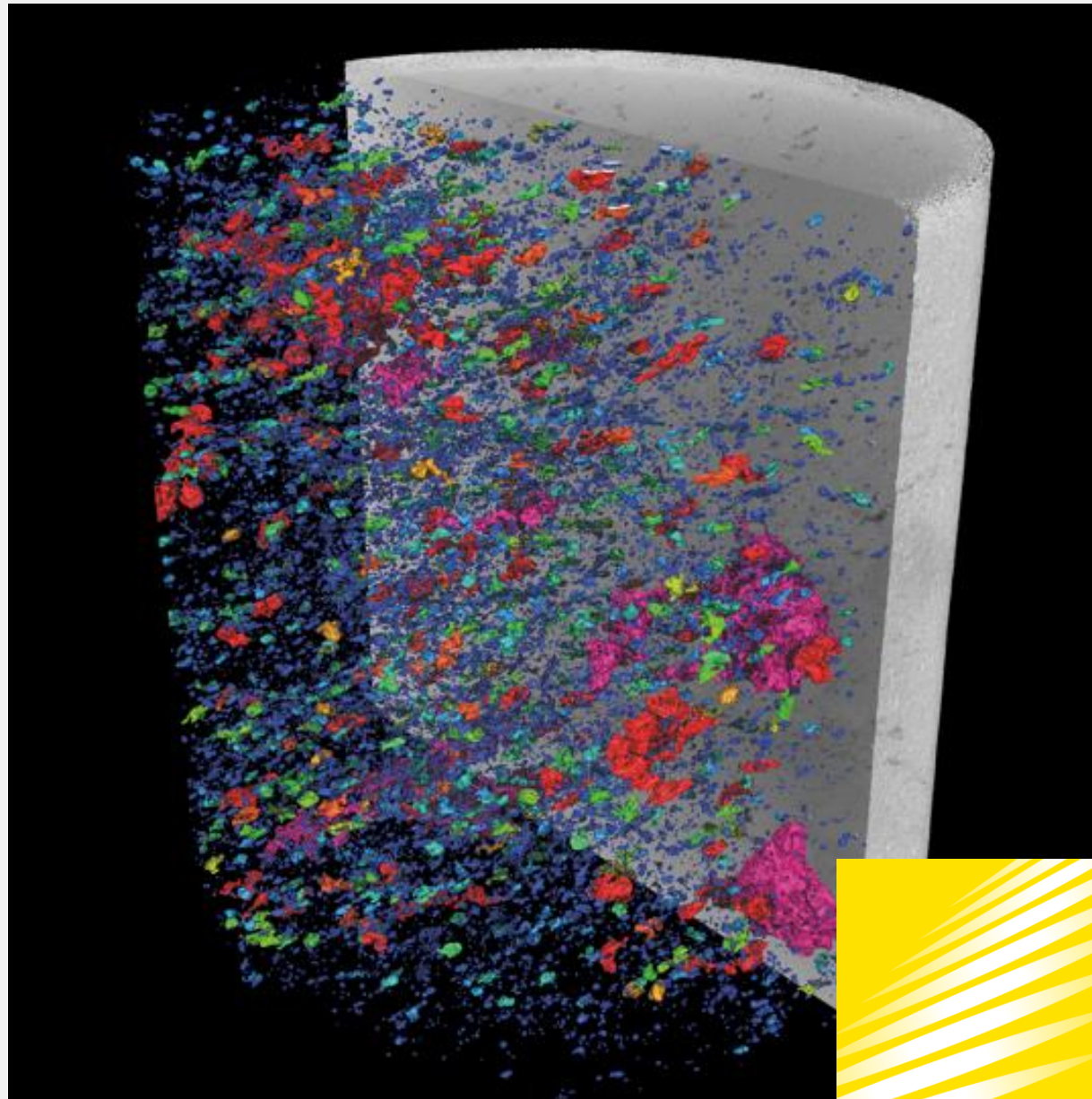
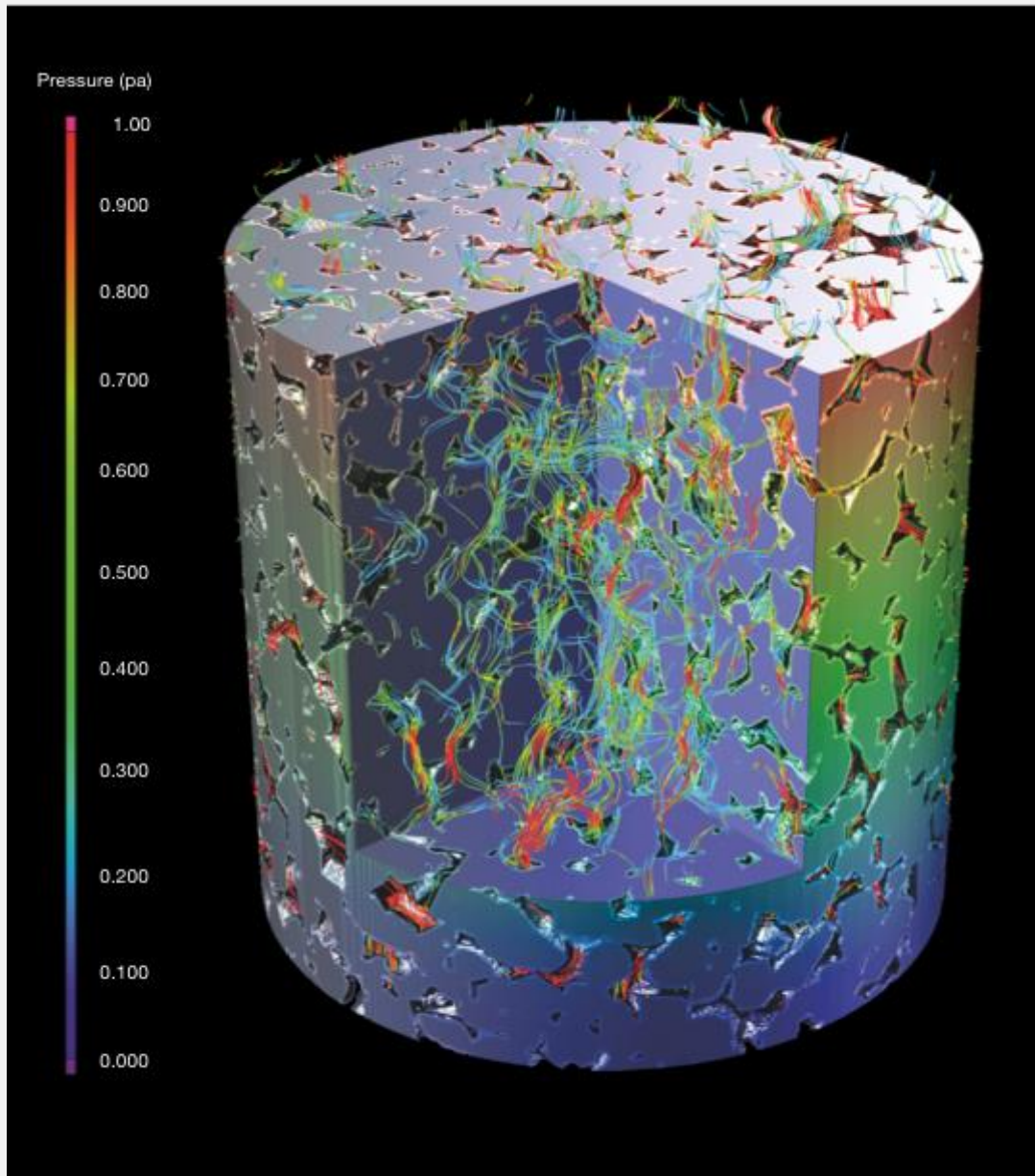
Scene coordinate system  
91.00 deg

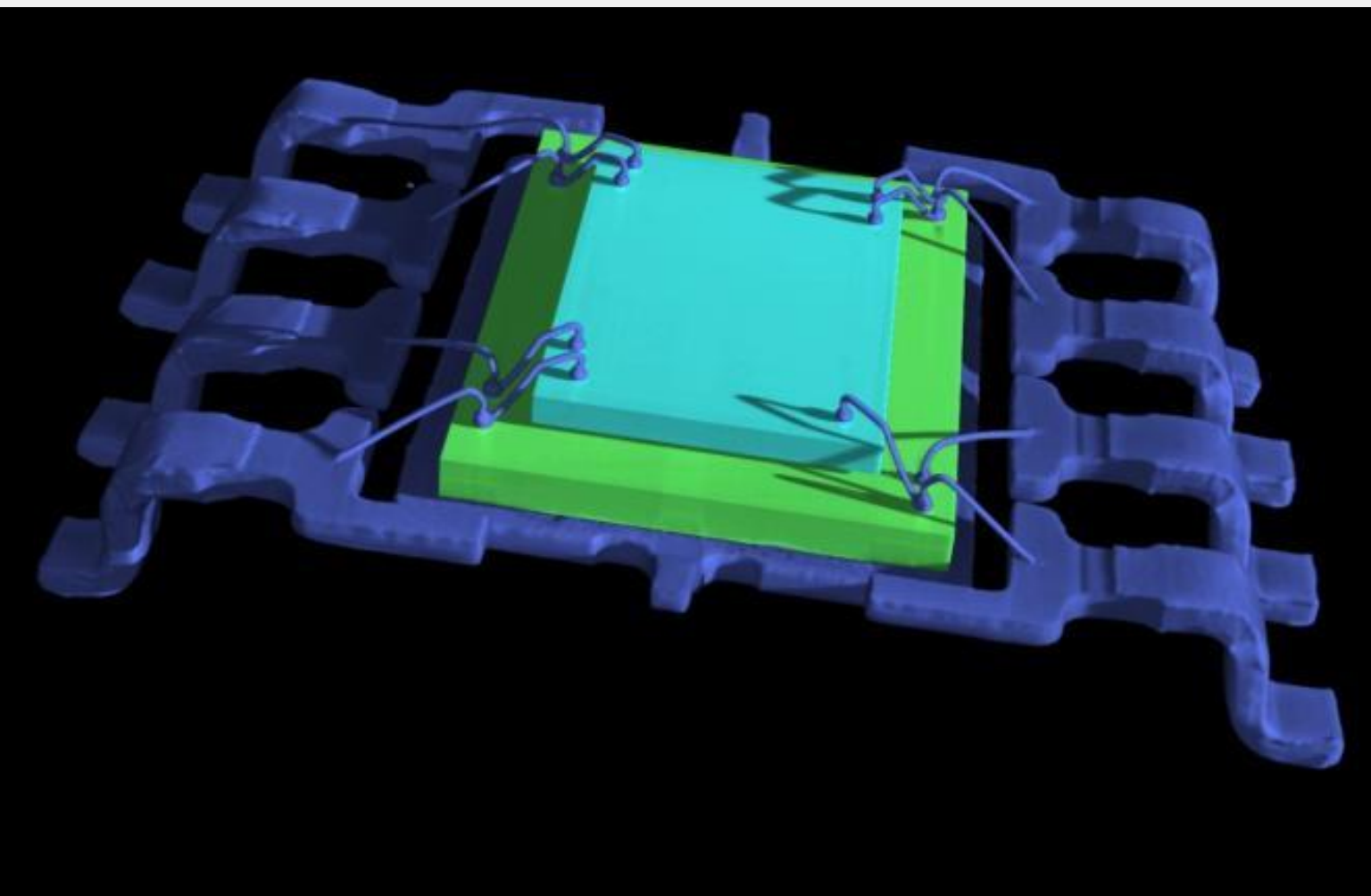


## MATERIAŁY POROWATE

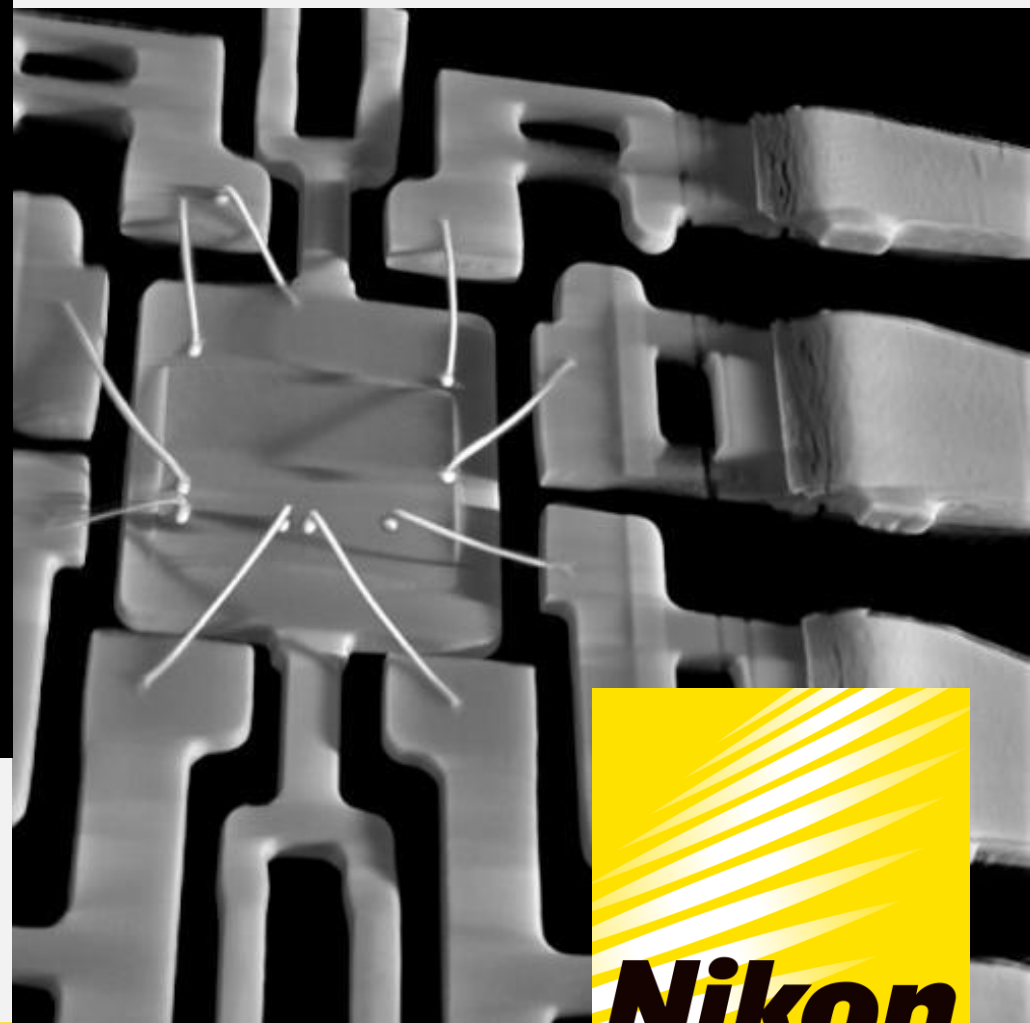


PIANKI

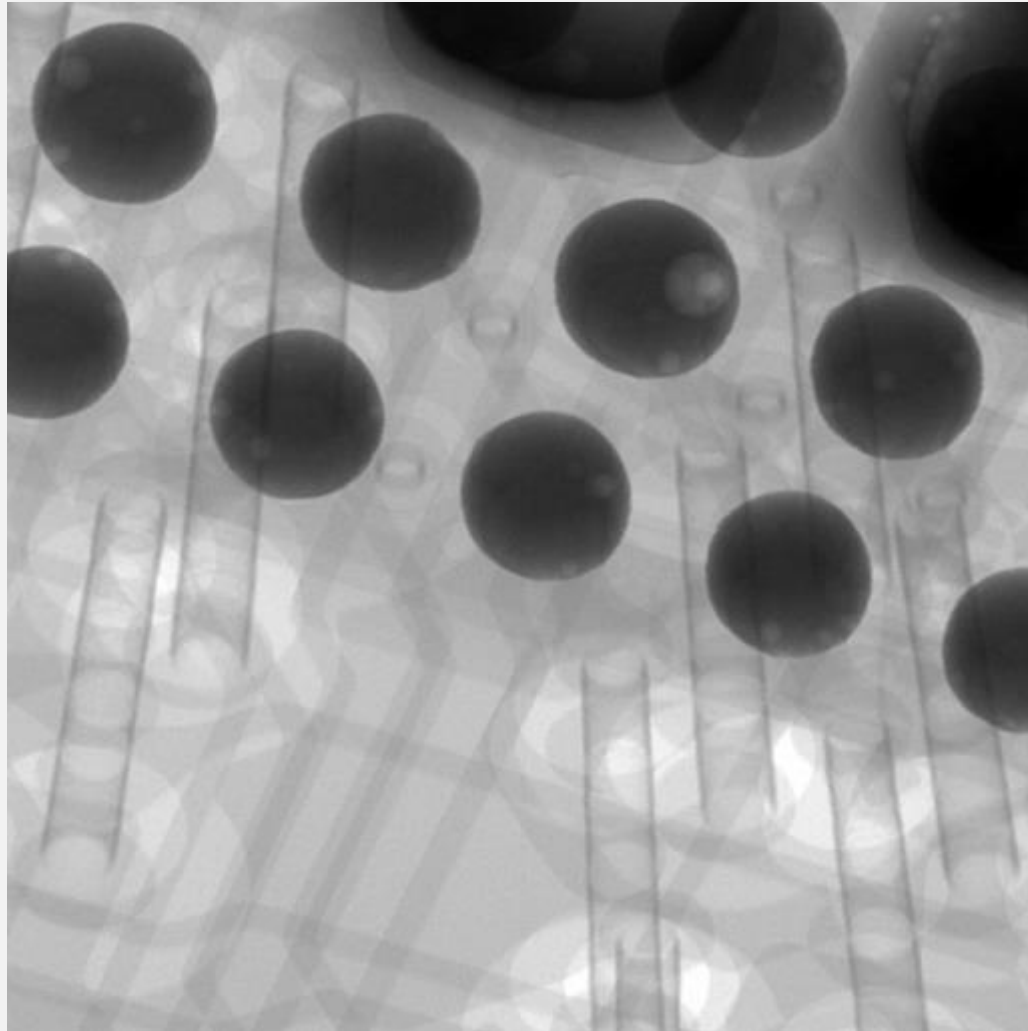
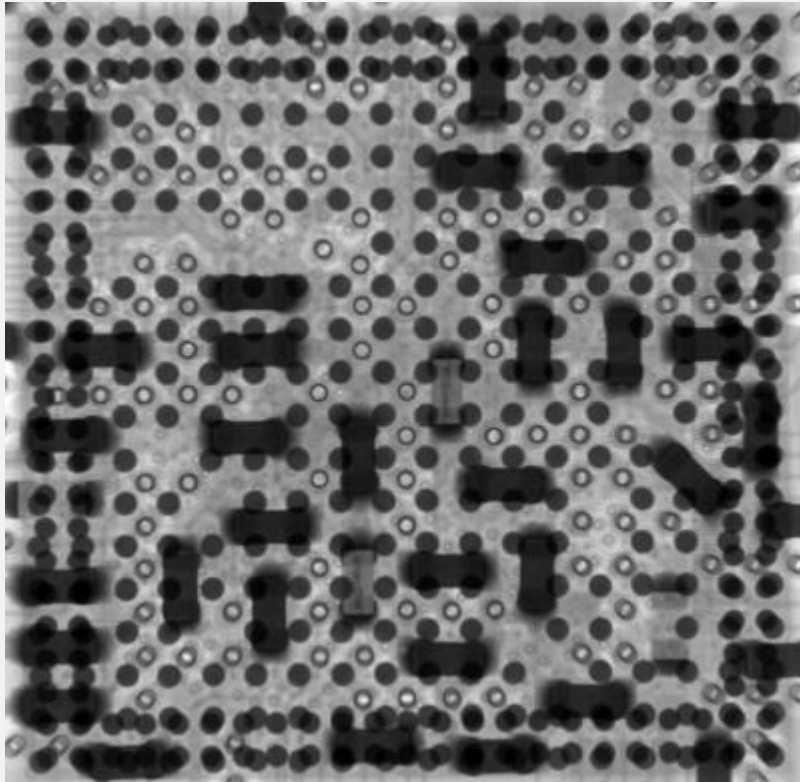


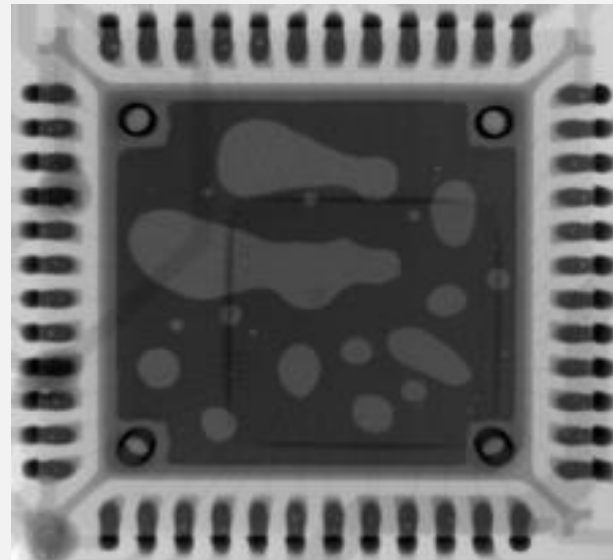
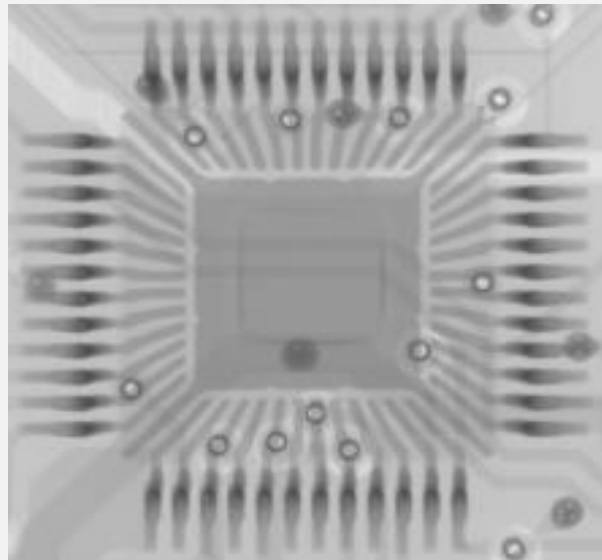


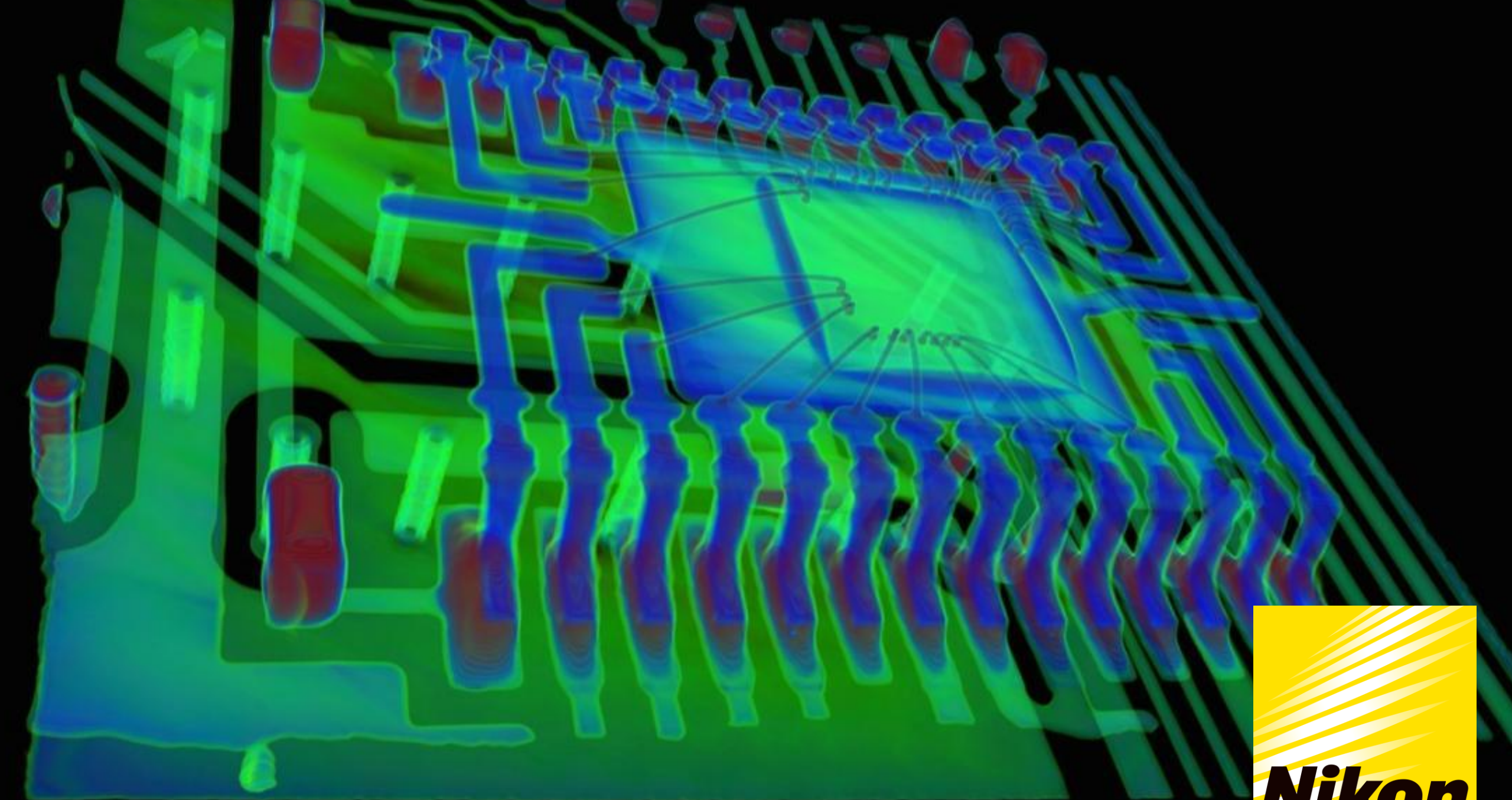
ELEKTRONIKA

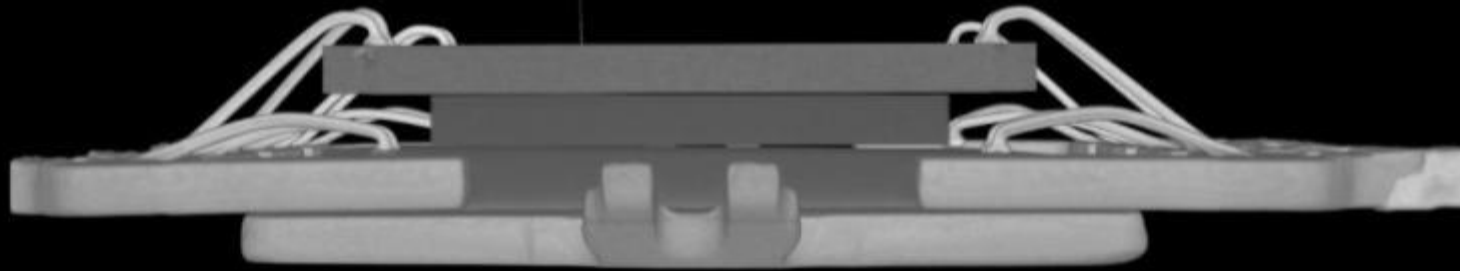
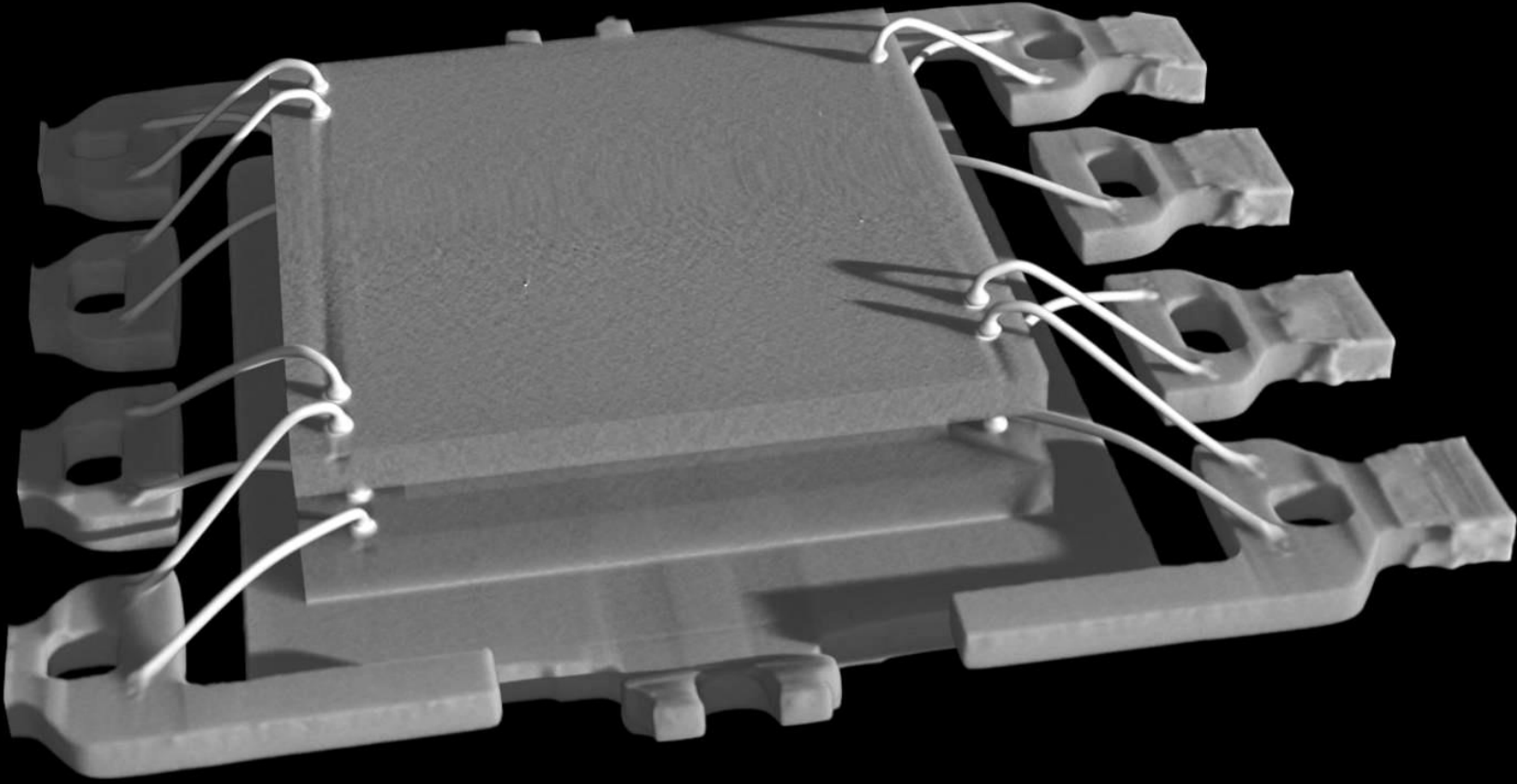






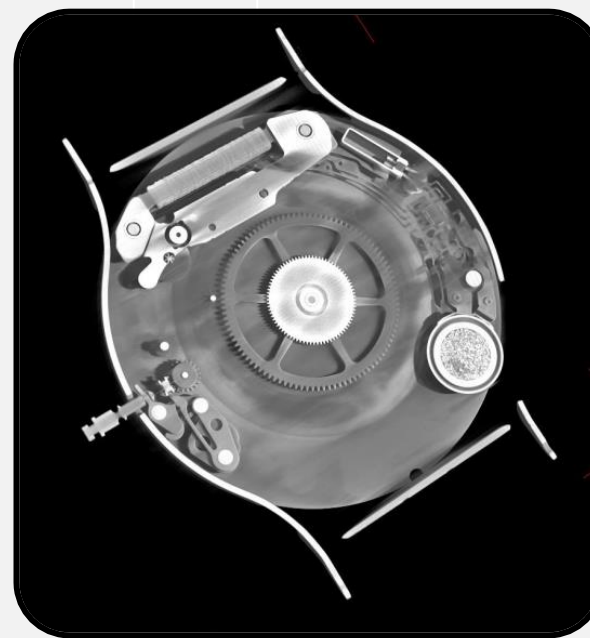
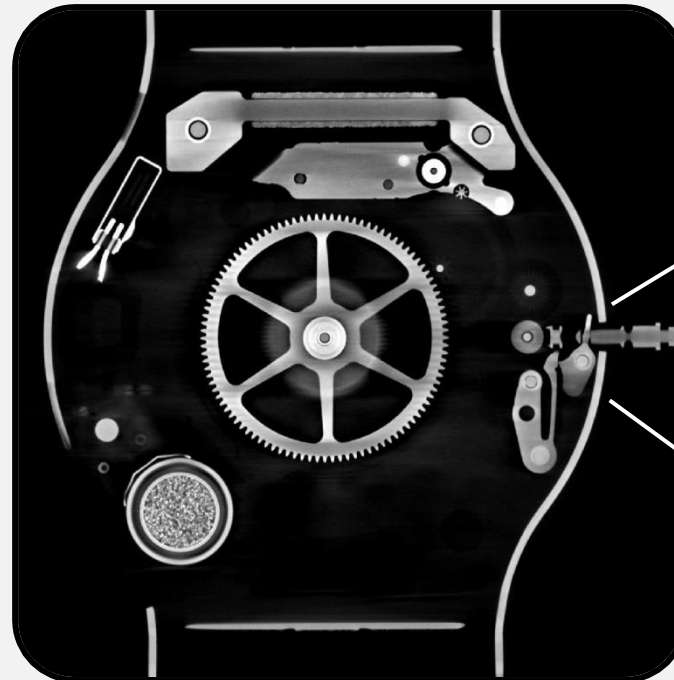
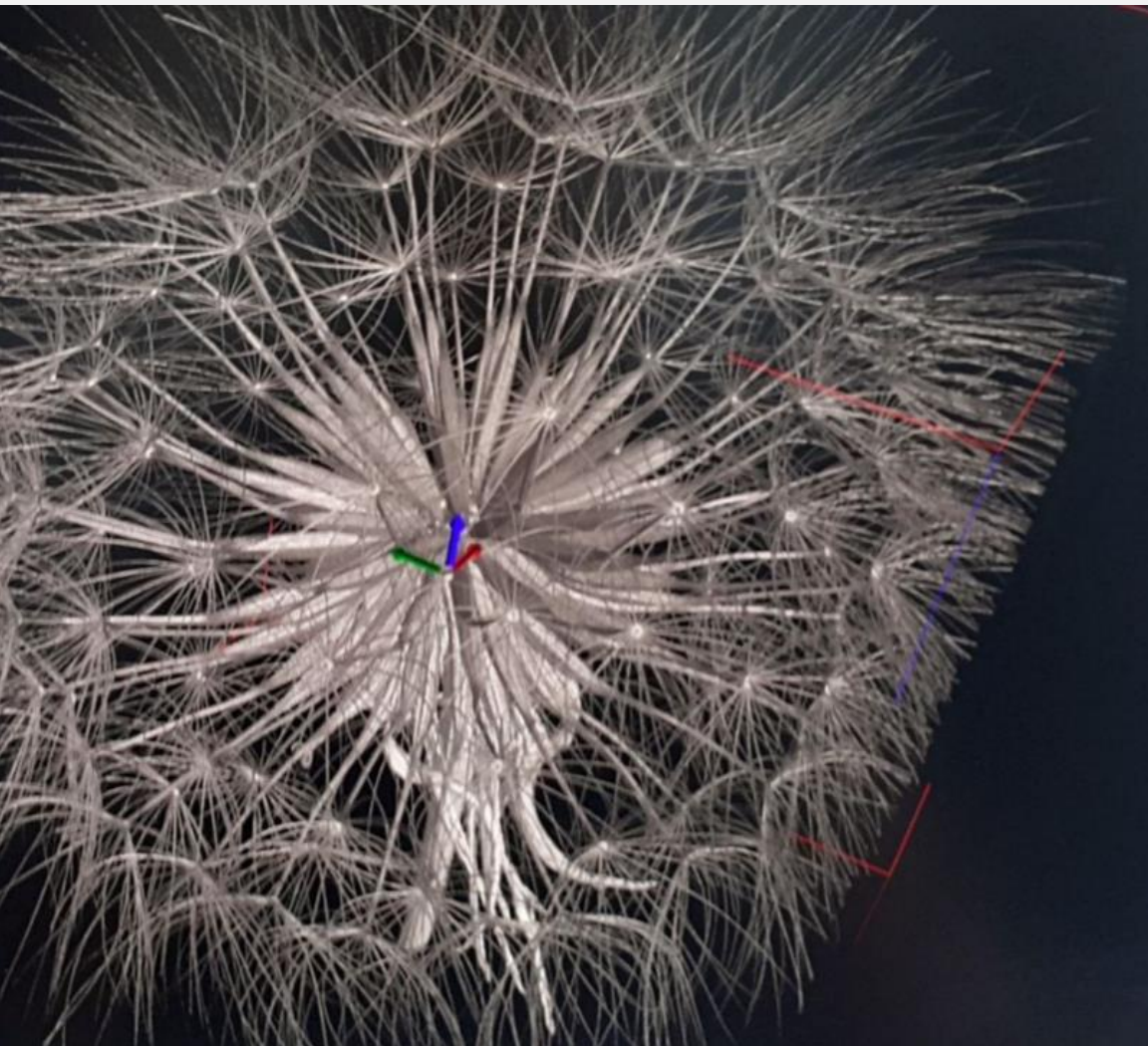


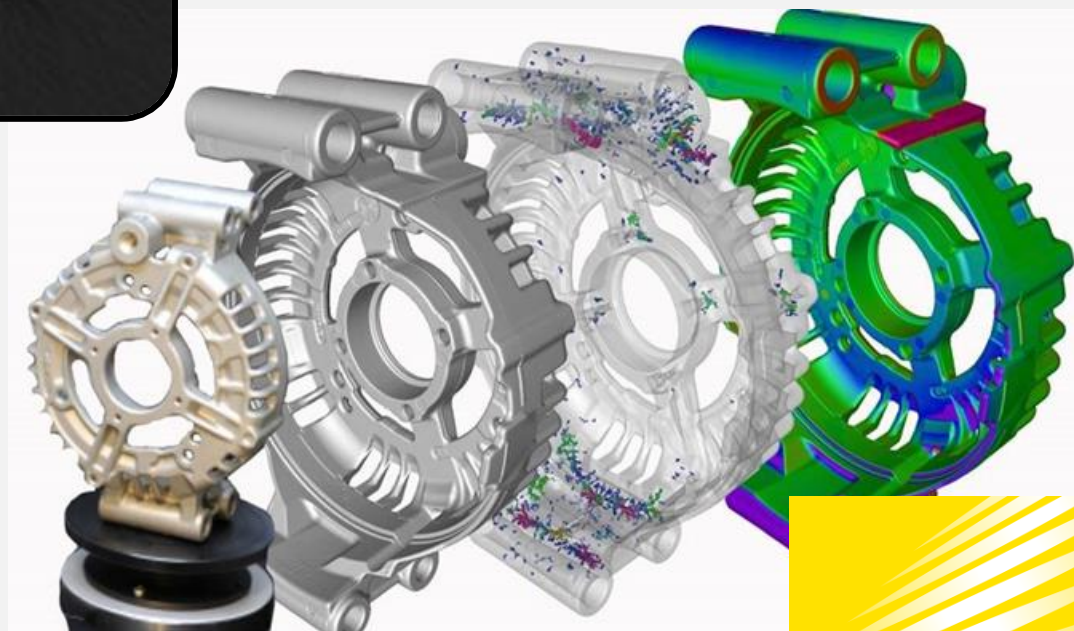
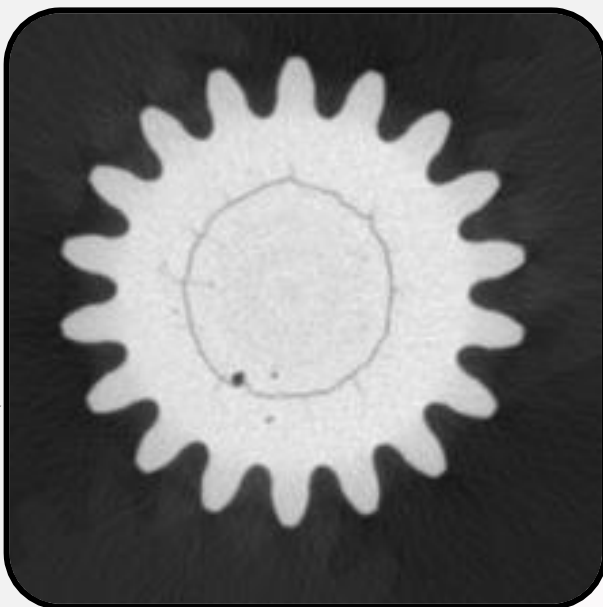
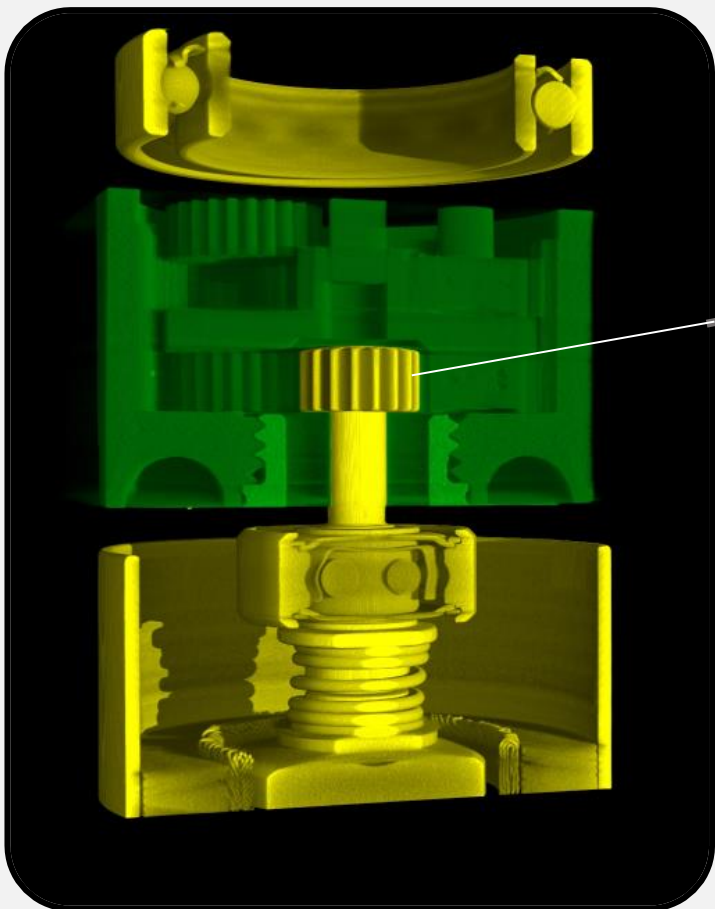






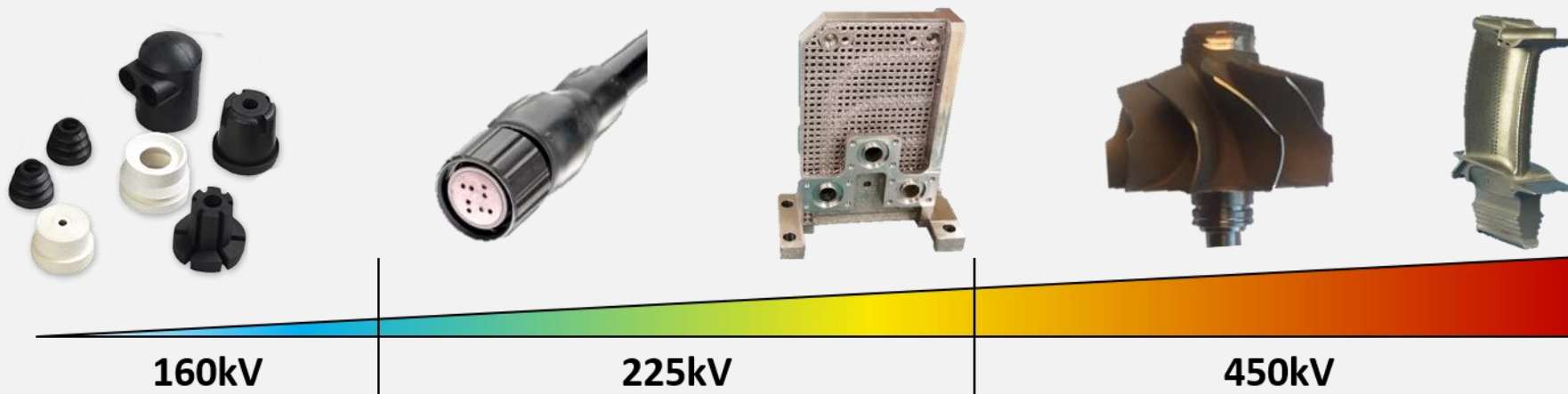
# PRZECYZYJNE MECHANIZMY OBIEKTY MIKRO I NANO





DUŻE I MASYWNE OBIEKTY  
ODLEWY

# WIĘKSZA GĘSTOŚĆ WYMAGA WIĘKSZEJ ENERGII (kV)





## XT H 225

- 225 kV
- 225 W



## XT H 225 ST

- 225 kV
- 450 W



## M2

- 450 kV
- 450 W





[marketing@smart-solutions.pl](mailto:marketing@smart-solutions.pl)

[\*\*www.smart-solutions.pl\*\*](http://www.smart-solutions.pl)