

Genetec product catalog



Table of contents

- Introducing Genetec 4**
- Our products and services 15**
 - Software applications 16
 - Hardware and appliances 24
 - Services and support 30
- Our industry solutions 35**

Introducing Genetec

Innovation begins with innovators

Genetec is a Montreal-based technology company specializing in physical security solutions and services for video surveillance, access control, automatic license plate recognition (ALPR), communications, and analytics.

When we first started out in 1997, we were a modest group of engineers with big dreams to build a security system that could empower our customers to master their environments.

This vision led to our very first IP-based surveillance system, offering more scalability, flexibility, and ease of use than anything else on the market.

More than 25 years and 1,600 employees later, we still act like any other start-up, using technology creatively to help solve new problems.

Our solutions go beyond security to deliver valuable insights that help enterprises, governments, and communities optimize their operations and environments for years to come.

And while our customers inspire us to look forward, we know truly clever solutions are the ones we build together. That's why we work closely with partners and customers in over 159 countries to develop products that are resilient, adaptable, and enduring.

Brand architecture: Intelligence

Helping you understand the everyday

Mastering your environment requires a deeper understanding of your organization, customers, and staff.

Your security infrastructure gathers valuable data around the clock – from your video surveillance to door reads, IoT sensors, and other sources. Making sense of such complex findings can be challenging, especially when dealing with larger security systems. So how can you turn this information into meaningful insight?

Our intelligence tools analyze multiple sources of data through an advanced analytics platform, giving you deeper situational information. Using correlation engines, you'll be able to connect the dots across your systems to see the big picture.

With this information at hand, you can then make better decisions, resolve issues more efficiently, and initiate improvements that positively impact your organization or community.



Brand architecture: Operations

Helping you manage the everyday

It takes the right tools to improve the efficiency of your operations.

Securing a complex environment requires a sophisticated security infrastructure – this can be difficult to manage. With protocols evolving faster than staff can be trained, it's easy for mistakes to happen.

Our operations tools simplify day-to-day tasks. They help you take control of your security environment, giving your operators new levels of visualization and incident management.

Once an incident has been addressed, your team can easily collect, store, and share evidence and other related files, ensuring investigations always go smoothly.

The result is that your personnel become more efficient and confident when handling everything from routine tasks to the unexpected.



Brand architecture: Security

Helping you protect your everyday

Protect your people, systems, organizations, and buildings.

Protecting the everyday requires a forward-thinking approach. At Genetec, we believe that centers on unification, flexibility, and trust.

Our flagship product brings video surveillance, access control, ALPR, communications, and analytics together in one unified view. This enables the flow of data across tasks, making it easier for the operator to fully understand what's happening and act quickly.

Our unified platform is also built with an open architecture, allowing you to design your system the way you want to. Over time, this can include turning on core modules or integrating new sensors and solutions from an extensive ecosystem of technology partners.

And since all our products come with built-in privacy and cybersecurity measures, you'll always have the tools and support needed to protect your data and systems.



Intelligence

Understand the everyday

Gain insights into your business and security environments through intelligence from your security system.



**Genetec
Citigraf.**

Decision support system for comprehensive response coordination



**Genetec
Clearance.**

Digital evidence management

Operations

Improve the everyday

Become more efficient through collaborative decision management and investigation management.



**Genetec
Mission Control.**

Collaborative decision management



**Genetec
ClearID.**

Physical identity and access management

Security

Protect the everyday

Protect your people, assets, and facilities with a unified security platform that blends video surveillance, access control, automatic license plate recognition, SIP communications, and smart video analytics within one solution.

Physical security solutions



Unified security platform



Security Center Omnicast.

Scalable video management



Security Center Synergis.

Complete access control



Security Center AutoVu.

Automatic license plate recognition



Security Center Sipelia.

Communications management system



Genetec Stratocast.

Cloud-based video monitoring

Modules & add-ons



Security Center modules

- Mobile and web apps
- Plan Manager map-based command & control
- KiwiVision™ video analytics
- Transaction Finder
- Intrusion panels

Security Center third party add-ons

- Analytics
- Industrial IoT & building management
- Enhanced visualization
- Productivity and operational tools
- Key management systems

Appliances



Streamvault™

Turnkey security infrastructure solutions



Our products & services

SOFTWARE APPLICATIONS

Genetec™ Security Center

Security Center Omnicast™

Security Center Synergis™

Security Center AutoVu™

Security Center Sipelia™

Genetec Stratocast™

Genetec Citigraf™

Genetec Clearance™

Genetec Mission Control™

Genetec ClearID™

Genetec Curb Sense™

AutoVu Cloudrunner™

HARDWARE AND APPLIANCES

Streamvault™

Synergis hardware

ALPR devices

SERVICES & SUPPORT

Genetec Advantage™

Genetec Professional Services

Security Center

See the big picture with a unified security view

Genetec Security Center is an open security platform that enhances situational awareness, unifies command and control, and streamlines system management.

This modular platform lets you handpick the devices, systems, features, and third-party integrations that match your unique requirements. It also empowers your team to respond to any situation by giving them access to the information they need, all in one central place.

Security Center is the foundation of our unified security portfolio. It's an intuitive platform, built from the ground up to unify all your security applications in a comprehensive view.

Unification is different from integration. Taking a unified approach means there's no more jumping between interfaces, tackling system compatibility issues, or dealing with complicated maintenance.

Instead, your team can manage policies, monitor events, run investigations, and handle maintenance, while ensuring data protection and privacy—all from one interface.

Unification goes beyond bringing systems together. Security Center streamlines the flow of data across all your security tasks, correlating information from all sensors and

alerting your team to the most pressing situations.

So where integration provides the breadth of information that you want, unification empowers your operators to use it more effectively.

Within Security Center, you'll find three core systems: Omnicast, Synergis, and AutoVu, our solutions for video management, access control, and automatic license plate recognition.

As your needs change, our open and modular platform allows you to evolve and modernize your installation by adding core modules, features, and integrations from an expansive ecosystem of partners.



Working smarter with video

Security Center Omnicast™ is a video management solution that gives you a clear picture of events and empowers you to quickly react to threats. The system scales with your needs and lets you take advantage of the latest hardware and analytics technologies. With a smarter approach to video, your operations and security improve over time, helping you to make better, more informed decisions.

Automate security and gather insights

Use video hardware of your choice

Protect the privacy of your people, systems, and data

Grow your system at your own pace

Get uninterrupted access to video 24/7

Start your day with confidence

Security Center Synergis™ is an access control system that helps you modernize your operations to ward off threats and handle incidents faster. The system makes use of existing investments, paving a viable path to stronger organizational security. With built-in cyber tools and a growing ecosystem of supported devices, Synergis ensures you can confidently protect your people and assets for years to come.

Synchronize cardholders across multiple systems

Manage/track visitor movement

Manage threat levels

Synchronize with Microsoft Active Directory

Protect against hardware failure



Find a needle in the haystack with ALPR

Security Center AutoVu™ is an automatic license plate recognition (ALPR) system within the Security Center platform that automates the reading and identification of vehicle plates. AutoVu makes it easier for you to locate vehicles of interest and enforce parking restrictions and permit compliance. Designed for both fixed and mobile installations, AutoVu improves public safety and increases operational efficiency.

-
- Unify ALPR, video, and access control

 - Understand vehicle flow with advanced graphical reporting (Free Flow plug-in)

 - Choose from versatile deployment options

 - Learn more with vehicle analytics and metadata

 - More than ALPR units – deploy your SharpV as access control readers and video cameras at the same time

Hear what you've been missing

Genetec™ Sipelia™ is a communication management system that centralizes SIP-based communications across your organization. It enhances your security team's awareness by unifying incoming calls with the rest of your security system. And when emergencies require swift action, Sipelia ensures you can tap your entire communication infrastructure to coordinate response and keep staff, visitors, and customers informed.

-
- Secure IP-based communication

 - Built-in SIP server and SIP client

 - Video and audio call recording and playback

 - Supported SIP trunks for external calls and connections to external phone systems

 - Partner agnostic, supporting a wide range of IP-devices and manufacturers

 - Public addressing through a live broadcast, pre-recorded message, or multi-language text to speech



Keep your sites safe with cloud-based video monitoring

Genetec Stratocast™ is a cloud-based video monitoring solution that allows you to stream live and recorded video from your laptop, tablet, or smartphone. The solution is easy to install, requires minimal upkeep, and helps secure your data. No matter where you are, you can confidently use Stratocast to ensure your business is safe, and operations are running smoothly.

Save video clips for later

Find the exact evidence you need

Monitor your business on the go

Stay cybersecure – always

Enjoy easy installation and maintenance



Close cases faster with a digital evidence management system

Genetec Clearance™ is a digital evidence management system (DEMS) that helps you quickly and securely collect, manage, and share evidence from different sources, speeding up investigations. Data from surveillance systems, body cameras, and civilians is efficiently gathered and stored. This gives you a quick and cost-effective way to collaborate between security departments, outside agencies, law enforcement, media, and the public.

Centralize digital evidence from all sources in one app

Review proprietary video formats from your web browser

Share and receive evidence electronically

Develop a camera registry program for your community

Govern use and access of digital evidence



Empower your organization with collaborative decision management

Genetec Mission Control™ is a collaborative decision management system that helps you understand unfolding events and quickly identify the best course of action. Using this system, you can detect and take control of situations based on real-time data gathered from sensors, security devices, and related applications. The system also prioritizes larger incidents and initiates collaboration between response teams, removing emotion from decision-making by guiding operators every step of the way.

[Interactive map-based views and visual reports](#)

[Dynamic standard operating procedures](#)

[Collaboration on large scale incidents](#)

[Monitoring of operator performance](#)

[Automated workflows with custom rules](#)

Secure your city through a shared lens

Genetec Citigraf™ is a strategic decision support system that allows law enforcement agencies to have real-time situational awareness when responding to emergencies. The system consolidates data from IoT sensors, video cameras, ALPR devices, CAD systems and other sensors to provide a common operating picture to all dispatchers and responders. This allows them to make insight-driven decisions during a mission, while sharing critical information with neighboring cities later on to improve disaster recovery and protect their citizens.

[Gather data from multiple sources](#)

[Correlate historical and live data to derive intelligence](#)

[Share the same information with field personnel](#)

[Detect and understand incident trends and risks](#)

[Collaborate through a common operating picture](#)



Take control of your access management

Genetec ClearID™ is a smarter access management solution that allows your organization to standardize, automate, and enforce security policies across all sites, while centrally managing the access rights of employees and contractors. The system helps you improve the flow of people moving about your organization, no matter the size. And, because it's unified with Security Center Synergis™, our access control system, you can deploy this system with ease and agility.

Easy-to-deploy cloud-based solution

Self-service portal with customized branding

End-to-end data security and privacy

Customizable and automated workflows

Multi-site management

Centralize your on-street parking enforcement

Genetec™ Curb Sense™ is a cloud-based central enforcement platform for parking and curb management. It leverages AutoVu mobile ALPR devices to gather comprehensive evidence of infractions, including vehicle positioning. Curb Sense is a flexible solution, allowing you to blend traditional on-street parking enforcement with the efficiencies of centralized e-citations processed by a desk officer.

Easy-to-deploy cloud-based solution

Accessible from anywhere through a web portal

Informed decision-making with clear data that highlights trends and KPIs

Mobile ALPR for central parking enforcement in real-time

Automatic dispatching of nearby officers when infractions are detected



Protect your communities – day and night, rain or shine

AutoVu Cloudrunner™ is a vehicle-centric investigation system that enhances your ability to solve crime. It goes beyond the license plate to detect vehicle characteristics like type, color and make, as well as vehicle behaviors like speed.

Cloudrunner gives officers access to the critical evidence needed to identify suspects and solve crimes.

Cloud-based, turnkey solution

Accessible from anywhere through a web portal

Intuitive and flexible interface requiring little to no training

Advanced analytics generate variety of vehicle characteristics

Flexible deployment thanks to the Cloudrunner CR-H2 solar-powered ALPR camera

Disclaimer: Currently only available in the United States and Canada

Streamvault

Streamvault™ is our line of all-in-one appliances, scalable storage solutions, and workstations. Built to simplify design, deployment, and maintenance, Streamvault paves the way to unified security and unleashes efficiency along the way.

Eliminate routine set-up tasks with operating system, databases, and Security Center pre-loaded

Reduce project risk and simplify design with guaranteed performance and retention period

Resolve issues faster with one contact for hardware and software questions

Improve system resilience with out-of-the-box hardening and cybersecurity best practices guidance

Speed up system installation with wizards-based enrollment and configuration tools

Keep your system secure with verified and built-in application, firmware, and operating system updates

Benefit from enhanced hardware warranties and next-day on-site service

Lower costs of deploying video analytics by running more streams per appliance



All-in-one appliances

Ideal for small sites or installations that don't require constant monitoring.

- Discrete designs that blend in with your environment
- Available with native support for IP door control hardware and analog cameras

Analytics appliances

A cost-effective path to smarter security with optimized configurations that can analyze a large number of video streams

- Pre-loaded with KiwiVision™ Privacy Protector™, Intrusion Detector, and unified security analytics
- Available in compact and rackmount models

Rackmount appliances

Streamvault rackmount appliances let you deploy a unified system to achieve your vision with fewer units.

- Comprehensive catalog with models adapted to mid-sized and enterprise installations
- Available with SATA, SAS, or SAN storage

Workstations

Deliver fluid playback and a responsive experience that matches your system's capabilities.

- Optimized for Security Center GPU accelerated video decoding
- Available for security stations and video walls

Synergis hardware

Move away from proprietary access control

Traditional access control systems limit your long-term flexibility with proprietary hardware. The Synergis™ IP access control system helps you break away from this closed model, allowing you to choose the devices that best meet your security needs. As the list of supported access control technology grows over time, you can easily upgrade your hardware and locks to keep your organization compliant and secure.

Integrate a growing and versatile selection of access control hardware from leading manufacturers

Choose from a wide range of supported door controllers, interface modules, electronic locks, and PoE-enabled edge devices

Simplify your migration to new technologies by keeping some hardware, wiring, and infrastructure

Enhance the long-term viability and flexibility of your access control investment

Enjoy greater peace of mind knowing that you are not locked into proprietary hardware

Get an IP-ready security system that provides real-time connectivity to your doors



Synergis Cloud Link

This cloud-ready and PoE-enabled IoT gateway supports non-proprietary access control modules from leading manufacturers.

- Up to 32 downstream RS-485 devices
- Up to 256 readers
- Up to 256 locks
- Up to 600,000 cardholders and 150,000 offline events



Intelligent controllers & modules

Using Synergis, you can select non-proprietary modules and panels from leading access control vendors to match your unique environment and security goals.

- Mercury Security LP intelligent controllers
- Axis A1601 network door controller
- All managed by Synergis Cloud Link or the Streamvault Series 300 appliance



Supported enclosures

Our enclosures are pre-wired with the appropriate power supplies and connectors, so that they're immediately ready for mounting. They can also support a number of controllers and modules.



Electronic locks

Integrate the following electronic lock models using the Synergis Cloud Link gateway, and easily manage them within Security Center Synergis.

- ASSA ABLOY - Aperio, Corbin Russwin, and SARGENT locks
- Allegion - Schlage hardwired and wireless locks
- SALTO - SALLIS line of wireless locks and locking devices
- SimonsVoss - SmartIntego Digital Locking Cylinder, Smart Handle, and Padlock

ALPR devices

From vehicle-mounted systems to fixed perimeter installations, AutoVu™ lets you choose the ALPR hardware your team needs to get the job done — whether that's securing a business, tracking wanted vehicles, or enforcing parking bylaws.

Fixed applications



AutoVu SharpV

The AutoVu SharpV combines high-resolution ALPR and context cameras with onboard processing and illumination in one ruggedized, environmentally sealed device. The SharpV is perfect for high-speed, high-reliability applications.

- Built to read license plates and stream video simultaneously
- PoE+ enabled device for simplified installation
- Plate capture up to speeds of 140 MPH (225 km/h)



Cloudrunner CR-H2

The AutoVu Cloudrunner™ CR-H2 is a solar-powered ALPR camera that provides high quality reads day and night, rain or shine. The solar-powered nature of the CR-H2 makes it a flexible solution that can easily be relocated as needed. It is perfect for vehicle-based investigation as it captures vehicles first with or without license plates.

- Built to detect vehicles and process vehicle-based analytics (including license plate information) in the Cloud
- Read range between 9ft and 125ft
- Vehicle capture up to speeds of 100MPH
- Built-in 4G LTE

Mobile applications



AutoVu SharpZ3

The AutoVu SharpZ3 rethinks what mobile ALPR can achieve. Built to leverage machine learning technology to its full potential, it combines high accuracy with vehicle and situation analytics to unlock new insights.

- 3rd optical sensor to maximize capture rate
- Built-in vehicle classification, plate origin and color recognition analytics
- Modular architecture enables addition of new capabilities over time

Genetec Advantage

Get more from your security investment

Genetec Advantage is a comprehensive software maintenance package that enhances the value and adoption of your security system. Gain added peace of mind knowing that you'll always have access to the latest software upgrades, premium support services, and other performance-boosting perks.

When a new software release becomes available, you'll be the first to know about it. Access the latest system capabilities, cybersecurity updates, and third-party integrations.

Should your certified system integrator or team member ever need assistance, our experts are a phone call away. Choose your preferred level of priority phone support —24/7 or only during business hours, or have a support engineer dedicated to your system. You can also get operator chat support to help your team resolve basic issues or answer 'how-to' questions.

Getting the most of your system means having access to the latest system knowledge, tools, and training. That's why all Advantage contracts also come with access to Genetec University, our new learning management system. This provides your team with self-service training and continuous learning so they can become masters at using our solutions.

Through our System Availability Monitor, your integrator can remotely monitor the health of your system to keep everything optimized and running at peak efficiency.

Whether you have a multi-site enterprise system or a small business setup, Genetec Advantage lets you focus your attention on your security operations rather than on the systems supporting it.



Genetec Professional Services

Invest in security backed by experts

Whether you're handling a mission-critical upgrade or need some guidance on cybersecurity, we're here to help. The Genetec™ Professional Services team includes everything from project management and deployment services to dedicated client care and support.

Our team works alongside channel partners to optimize system performance and mitigate project risks so that you can get the most from your security investments.

From new installs to upgrades and expansions, we can assist you with designing the most optimal and reliable system and provide on-site support during deployment.

As you continue expanding your security system, we'll team up with your channel partner to ensure your system delivers the quality and performance you expect and need.

Working with our professional services team means you'll get access to expert knowledge, best practices, and tips. We'll also suggest features and other system optimizations that will enhance your experience with our security solutions.

Maybe you'd like to verify that you're getting the highest levels of protection possible with our built-in cybersecurity features, or you need some assistance with a major software update to access the latest features. Or perhaps you're ready to take on a complex system upgrade and want to evolve your security platform to gain more business insights.

No matter your ideas or objectives, you can lean on our team to get additional guidance and support, and ensure all goes to plan.



Our industry solutions

Higher education

Retail

Financial services

Justice and public safety

Airports

Parking enforcement

Healthcare

Utilities and energy

Enterprise/Commercial

Industrial/Manufacturing

Traffic

Transit

Venues and open spaces

Higher education

Bring your campus together
with unified security



Providing a safe and vibrant campus means finding the right balance between security, accessibility, and privacy.

Our unified security platform lets your team handle it all. Easily monitor video, manage access control, enforce parking across multiple locations, and communicate with students, faculty and visitors over PAs or intercoms — all from a single solution. Use built-in video anonymization to protect the privacy of people as they move about your campuses.

Maintain an all-encompassing view of teaching facilities, research labs, dormitories, libraries, sports complexes, parking lots, and more through an interactive map interface.

Be prepared to deal with any emergency by establishing clear connections and communication pathways with law enforcement and other local authorities.

The system will guide your operators through the right steps to resolve alarms, situations, and emergencies with easy-to-follow response procedures to reach a resolution to any situation.

[Secure your entire campus](#)

[Give students one card for everything](#)

[Enforce parking regulations](#)

[Integrate existing infrastructure](#)

[Scale your system over time](#)

Retail

Create a safe and profitable shopping experience



Protecting people, property, and shrinkage numbers is a fact of doing business for retailers.

Our unified security platform empowers your team to work more efficiently. Monitor video, control access to restricted areas, detect intrusions, and broadcast live or event-based PA messages from a single map interface.

Link your POS transactions to video to detect staff errors and suspicious transactions. Connect electronic article surveillance (EAS), inventory tracking, and analytics sensors to minimize loss across stores and warehouses. The system's built-in cybersecurity and privacy defenses ensures data – including client information – remains secure.

If a delivery door is left open or a repeat offender enters your store, our platform alerts your team. After responding, they can quickly compile digital evidence and share it with local authorities.

As your business evolves, use your security data to learn more about how customers shop and pinpoint improvements to increase conversions.

[Manage all your systems in one platform](#)

[Keep existing devices and upgrade over time](#)

[Respond on the go with your phone or tablet](#)

[Save time and money during investigations](#)

[Gain insights on customer behaviour](#)

Financial services

Bank on a unified approach to security

Safeguarding people, data, and assets is critical to the success of any financial institution. Our unified security platform gives your team the information they need to resolve incidents quickly and safely.

Manage video, control access to sensitive areas, and detect intrusion across your branches, headquarters, and data centers – all from one intuitive solution. Built-in privacy and cyber defenses help you protect identities, secure data, and avoid costly breaches.

Respond to any event with greater agility using your phone, workstation, or tablet. Speed up investigations by integrating ATM transactions with video surveillance and share digital evidence with authorities within the same platform.



Over time, expand your use of this flexible security platform to leverage analytics, track vehicles, and enhance customer service.

[Monitor all security systems from one location](#)

[Work smarter with a unified security view](#)

[Benefit from integrated privacy and data protection](#)

[Manage, collect, and store digital evidence](#)

[Choose your own cameras and devices](#)

Justice and public safety

Protect your city through a unified view



Cities are dynamic, changing places– and to be successful, they must also be safe. Our unified safety platform gives your team the information they need to efficiently respond to any situation.

Manage video surveillance, vehicle tracking, computer-assisted dispatch (CAD), 911 calls, gunshot detection, and other systems in one common operating picture. Work from an intuitive map interface to derive insights based on historical and live events.

Our platform aggregates and analyzes data from multiple systems. It then alerts operators to situations-in-progress and guides them through the right steps to reach resolutions – fast.

Facilitate public-private collaboration by enabling people and businesses to selectively share camera feeds and recorded video. Investigators can then collect the digital evidence and share files with the district attorney’s office and other agencies to close more cases.

Centralize your public safety operations

Reduce response time with a unified view

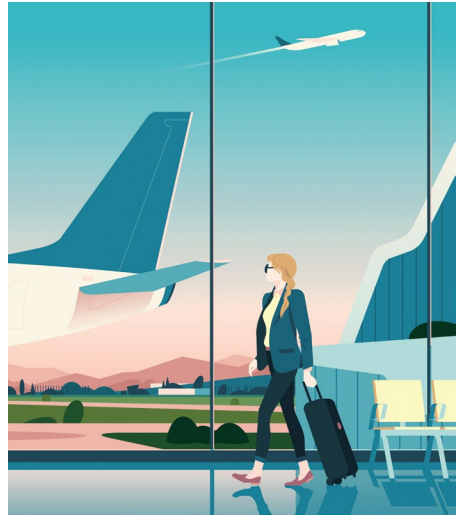
Enhance coordination between agencies

Facilitate public-private collaboration

Increase effectiveness of investigations

Airports

Keeping passengers safe from curb to gate



Building a successful airport means delivering new experiences in a safe and secure environment that runs like clockwork.

Our unified security platform helps your team work more effectively. Manage video surveillance, access control, perimeter intrusion detection, analytics and airport specific systems – all from one intuitive, map-centric solution.

When security issues arise – such as luggage left behind – the platform will immediately alert your operators and guide them through a set of instructions to ensure SOP compliance.

The openness of the platform gives you the ability to grow your security system over time. This means you can add cameras to expand coverage of your perimeter, gates, and terminals. You can also use your security data to learn how people move through your airport and make changes that reduce wait times and increase profit.

[Manage security from curb to perimeter](#)

[Control access to restricted security areas](#)

[Meet compliance and cybersecurity mandates](#)

[Evolve operations with an open platform](#)

[Share video and data with outside agencies](#)

Parking enforcement

Boost parking compliance, service, and security



Parking shouldn't be a headache for drivers, nor for the officers who enforce it. With our automatic license plate recognition (ALPR) system, your team can complete patrols faster and catch more violators.

Using ALPR technology, the license plate number acts as a virtual permit. This allows drivers to park and go, without having to deal with stickers, hangtags, or cards.

Make payment more convenient for drivers by offering easy-to-use mobile apps and digital pay stations. Track your lot occupancy in real-time and guide drivers to lots with available spaces to improve traffic flow.

When you install ALPR cameras on vehicles and at lot entrances, the system automatically scans license plates and alerts operators to permit, overtime, or scofflaw violations.

With more efficient patrols, you can enhance compliance and service, and quickly recoup your ALPR investment.

[Increase enforcement efficiency](#)

[Identify scofflaws during routine patrols](#)

[Track violations and occupancy in real-time](#)

[Enforce all parking regulations simultaneously](#)

[Automate gated access and prevent fraud](#)

Healthcare

Boost safety and compliance to deliver better care



Balancing accessibility, security, and compliance fosters an efficient healthcare environment primed for exceptional care. Our unified security platform empowers your team to become more effective.

Monitor video and manage events from doors, nurses' call stations, parking solutions, and other systems from a single interface. Use built-in video anonymization features to protect patient, staff, and visitor privacy.

Manage employee access to rooms and buildings according to their qualifications and roles. Further boost compliance by restricting access rights to specific groups or individuals to counter drug theft at dispensaries, keep pollutants out of cleanrooms, and protect patient records.

In case of emergency, respond to alarms using interactive maps and follow guided procedures to get things back to normal, fast.

Even with fewer resources available, your team will become more effective at protecting everyone, while keeping operations compliant and on track.

[Manage all systems from one location](#)

[Grow your system over time](#)

[Boost parking revenues and compliance](#)

[Protect identities with video anonymization](#)

[Enhance cybersecurity resilience](#)

Utilities and energy

Strengthen the resilience of your critical infrastructure



Defending critical infrastructure requires a multi-layered approach. Our unified security platform gives your team the tools to stay vigilant and compliant.

Manage video, access control, intrusion, fire detection, SCADA, and other business systems in one intuitive solution. Efficiently monitor all remote sites from a central location and improve your cybersecurity with the latest built-in defenses.

No matter how industry regulations evolve, our flexible platform helps you adapt.

Using a map-centric view, define restricted areas to identify suspicious perimeter activity. Add analytics and automatic license plate recognition systems to track incoming and outgoing vehicles, and validate drivers' identities.

The system alerts your team to incidents and guides them through standard operating procedures, ensuring your sites remain fully compliant and secure.

[Manage security and compliance in one platform](#)

[Monitor all your sites from a central location](#)

[Adapt to ever-evolving regulations](#)

[Boost perimeter security and access rights](#)

[Enhance emergency response with automation](#)

Enterprise/ Commercial

Boost security and operations
across your corporate sites



To keep people, assets, and data safe, you need to know what's happening across your enterprise. Our unified security platform gives your team the visibility and tools to enhance security from headquarters to remote offices.

Manage video, intrusion, employee and visitor access, and intercom calls from any location. Add automatic license plate recognition (ALPR) cameras to your entrances to track vehicles and automate access to gated parking lots.

As your security evolves, you can choose the devices and systems you need. You can also use built-in cybersecurity defenses and other modules that help you keep buildings secure and compliant.

Boost company productivity by streamlining the authorization of access control rights based on employee roles and company policies. Use this to grant employees access to multiple sites using a single card or mobile credentials, so your organization flows better.

Monitor all your systems within
one platform

Centralize operations for
added efficiency

Extend security to elevators
and perimeters

Allow tenants to manage their
own systems

Enhance traceability with easy reporting

Industrial / Manufacturing

Keep your people and
operations safe

A safe, well-run, and compliant environment sets the foundation for a thriving manufacturing business. Our unified security platform makes it easier for your operators to handle any challenge and limit down time.

From a single interface, manage alarms, video, access control, analytics, fire protection, building automation, and other systems. Assign access rights to employees and contractors based on their qualifications and ensure workers are wearing the right safety gear to avoid injuries.

If equipment malfunctions or air quality becomes hazardous, the system will alert your operators and guide them through the steps to resolve the situation and keep employees safe.



Counter theft by using cameras and sensors to detect activity in restricted areas and at perimeters and track incoming and outgoing vehicles. Standardizing security operations across your sites helps your team maintain compliance and keep unauthorized people out.

[Get one unified security view for all sites](#)

[Automate tasks to boost operator efficiency](#)

[Detect hazards using analytics](#)

[Protect data with built-in cyber defenses](#)

[Adapt your security as operations evolve](#)

Traffic

Keep people moving with unified traffic monitoring



Helping commuters reach their destinations without setbacks enhances city life. To do that, you need to keep pace with evolving traffic conditions and trends.

Our unified platform gives your team the tools to quickly spot traffic slowdowns and get roads back to normal, fast.

Consolidate data from traffic sensors, dynamic message signs, cameras, analytics, and incident management into one intuitive map interface. Identify accidents and traffic congestion in real-time and coordinate detours and response without switching systems.

The system guides operators through standard operating procedures to handle every situation in a consistent, efficient way that keeps people moving.

As your traffic needs change, our open platform evolves with you. Access historical data and add new technologies to keep improving your city's mobility and procedures over time.

[Manage all traffic data in one platform](#)

[Communicate detours from the map](#)

[Optimize automated response to any event](#)

[Gain insights from historical data](#)

[Adapt and improve operations over time](#)

Transit

Create a safe and positive passenger experience



Providing a smooth and safe mass transit environment boosts ridership and revenue. Using our unified security platform, your team can quickly spot issues to secure your entire operations.

See what's happening across platforms, stations, and depots, and onboard vehicles. Work from a central control room to manage video, analytics, access control, intercom, passenger notification, and other systems. Use advanced mapping, vehicle geolocation, and sensor data to respond to incidents and automate tasks.

If maintenance issues or emergencies arise, your operators can go from response to resolution in minutes using easy-to-follow procedures that ensure compliance. They can also retrieve and share evidence with law enforcement to coordinate an effective response.

You can also use your security data to shorten passenger wait times, streamline parking, and help secure big city events.

[Get unified command and control](#)

[Extend surveillance onboard vehicles](#)

[Enhance operations with analytics](#)

[Strengthen cybersecurity and privacy](#)

[Add devices to grow your platform](#)

Venues and open spaces

Secure your venue inside and out



Offering guests a safe and memorable experience is the cornerstone of a successful event.

Our unified security platform allows your team to secure your venue inside and out. Work from one intuitive solution to manage video cameras, door locks, intercom calls, parking, and other systems.

Quickly identify crowd bottlenecks, retail theft, or more serious threats – all from an intuitive map interface. During emergencies, operators are guided through standard operating procedures (SOPs) and prompted to share information with police to coordinate an effective response.

Speed up investigations using the same platform. Build cases, store evidence, and securely email digital files to authorized individuals in other agencies.

No matter what comes up or how your operations evolve, this flexible platform gives your team the tools to handle it all.

[Choose from a wide range of cameras](#)

[Enhance door security](#)

[Manage your parking efficiently](#)

[Collaborate with local authorities](#)

[Track the flow of people](#)

Innovation that evolves with you

The world around us is constantly changing. That's why we strive to offer you long-term value and resilience in everything we create.

At Genetec, we continue to broaden our vision for physical security and work with our customers and partners across industries to engineer truly clever solutions.

We do that by listening to your unique ideas and rethinking the bigger picture. All that knowledge is then put to action in our products to benefit our global user base.

So no matter what comes up in the future, you can effectively protect and grow your business using our physical security solutions.

Corporate Headquarters
Genetec Inc.

2280 Alfred-Nobel Blvd.
Montréal QC
H4S 2A4
Canada

Toll Free: +1 866 684 8006

Canada & USA:

Tel: +1 514 332 4000

genetec.com

© 2022 Genetec Inc. All rights reserved. GENETEC™, OMNICAST™, SYNERGIS™, AUTOVU™, FEDERATION™, FLEXREADER™, STRATOCAST™, GENETEC SIPLEIA™, GENETEC CURB SENSE™, CITYWISE™, GENETEC CLEARANCE™, STREAMVAULT™, GENETEC CITIGRAF™, GENETEC MISSION CONTROL™, GENETEC CLEARID™, GENETEC PATROLLER™, COMMUNITY CONNECT™ and their respective logos are trademarks of Genetec Inc., and may be registered or pending registration in several jurisdictions. Other trademarks used in this document may be trademarks of the manufacturers or vendors of the respective products.

