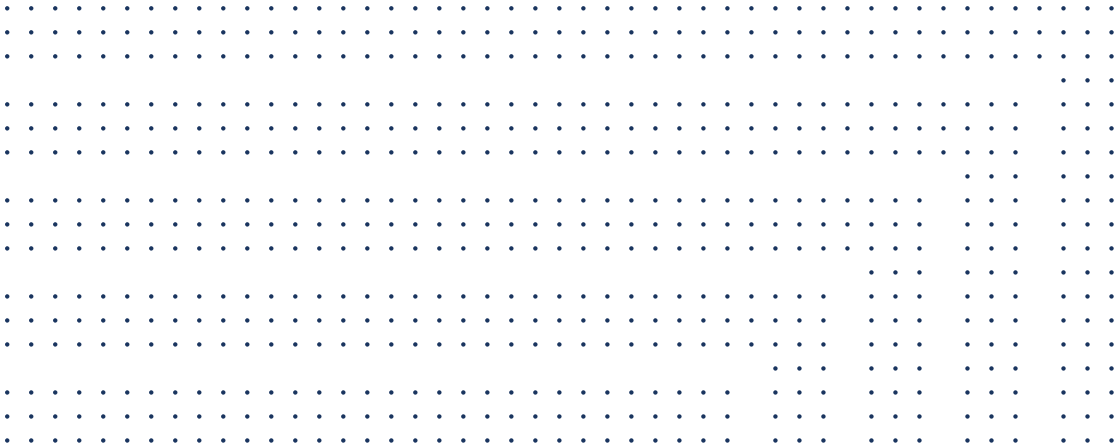


Restricted Security Area (RSA) Surveillance in Security Center

Securing perimeters with 360° intrusion detection capabilities



Security Center Restricted Security Area (RSA) Surveillance unifies various detection systems, such as fence, radar, laser, LiDAR, and video analytics into Security Center, integrating different technologies under one unique visualization pane and helping you reduce false alarms. This enhances your overall security and operations, providing your operators with greater command and control.

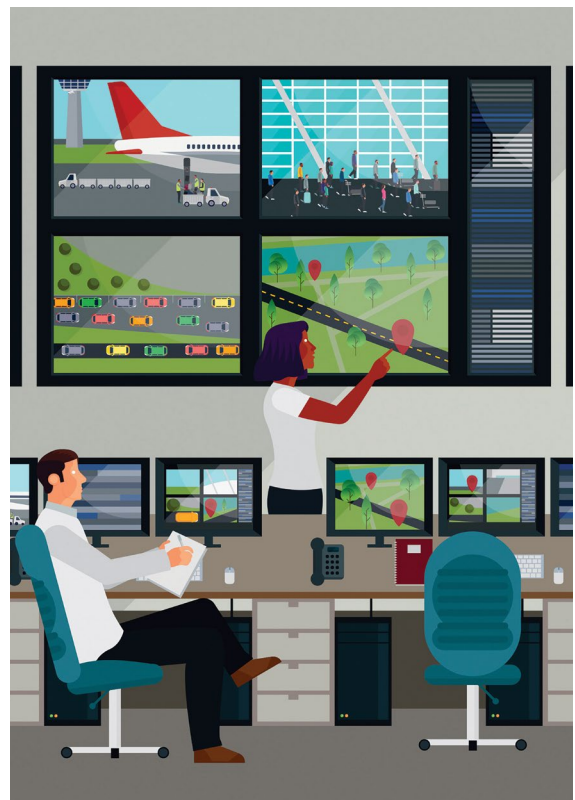
Perimeter protection is the first line of defense for any intrusion that threatens a restricted security area in protected infrastructure. Usually with an expansive area to protect, infrastructures such as oil rigs, airports, prisons, and utilities facilities are faced with challenges, not only in securing their perimeter and restricted security areas, but also in coordinating a response in the event of an intrusion. These critical infrastructures rely on different technologies to secure their surroundings. However, these technologies are often times siloed, leading to false alarms as a result of their limitations, which include environmental sensitivity, range, lighting, and identity classifications.

Unified operations

Traditionally managed as stand-alone systems, intrusion detection systems such as radar and laser-based systems can now be unified with other security infrastructure managed by Genetec™ Security Center, providing you with heightened awareness and responsiveness.

Your security personnel can now utilize the same Security Center interface that allows them to monitor video cameras, physical access control, and vehicle movement, to monitor perimeter intruders. This allows your operators to neutralize threats faster by viewing RSA Surveillance events linked to multiple security cameras, as well as run investigations by reviewing archived footage tied to RSA Surveillance activity.

By leveraging Genetec Mission Control™ — our collaborative decision management tool — your operators are guided through their resolution process, all within the same platform. This helps to deliver a comprehensive strategy that offers multiple forms of security for your facility, in all restricted areas and beyond the fence line.



How it works

With the RSA Surveillance module, Security Center connects to the radar or laser detection sensors over your facility's security network. The RSA system syncs events and alarms in real time with Security Center, allowing your operators to instantly view all activity and threats. Potential threats are handled directly in the alarm management task or maps of the facility.

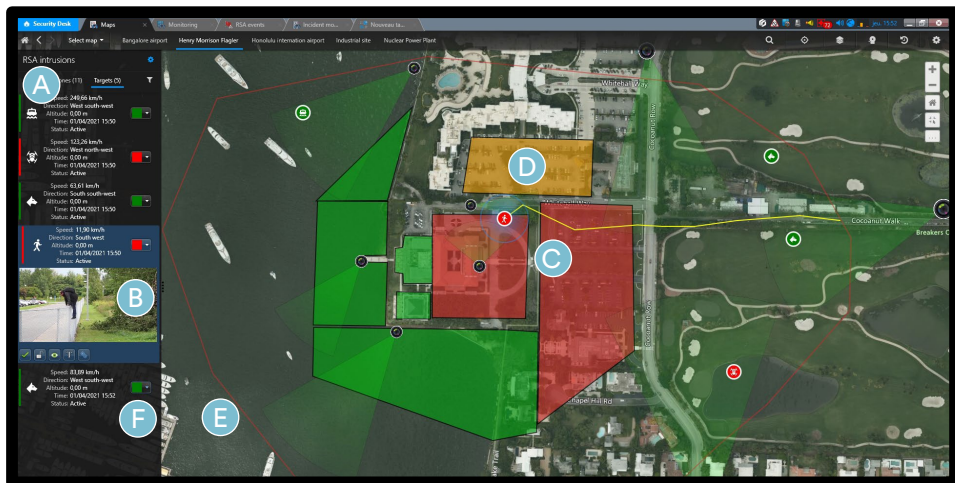
By automatically synchronizing RSA intrusion areas, this introduces a new layer of information and command and control capabilities on Security Center maps. Your security personnel can now visually monitor activity and view live or recorded videos associated with each target. They can acknowledge intrusion alarms on a map and use reporting tasks for focused investigations.

RSA Surveillance's geo-locating capabilities enable your operators to accurately track targets, providing them with greater visibility, hence the ability to confidently take corrective action.

The RSA Surveillance devices can be easily added to your Genetec security system using the Security Center configuration interface. You can automatically import multiple intrusion zones from the devices and add them to the maps. Once imported, radar detection zones become another layer on the Security Center dynamic maps and can be armed and disarmed on schedule.

All intrusion data is stored and made available to you through the dedicated investigation task. Your operator can search per intrusion event (applying one or multiple filters) and replay the target trail on the map, side by side with the camera view.

Intrusion task



- A** Monitor RSA Surveillance events in real time with dedicated icons to indicate the type of intrusion
- B** View live video associated with RSA Surveillance devices to display speed, direction, and altitude of intrusion
- C** Track moving targets on the map with target's path automatically fused when detected by multiple RSA Surveillance devices

- D** Arm, disarm, or set restricted zones to maintenance mode
- E** Create buffer zone to pre-qualify potential threats before they enter into restricted zones
- F** Assign threat level of potential intrusion to friend, foe or undefined with color coded icons

Key benefits

Use 360° intrusion detection, allowing you to detect various kinds of new intrusions, like drones

Arm, disarm, or set restricted zones to maintenance mode to help reduce false alarms

Integrate different technologies such as fence, radar, LiDAR, and video analytics to better qualify threats

Unify video management, access control, and Mission Control — our collaborative decision-making tool — to guide operators for faster response time

Identify friends from foes using ADS-B, to recognize aircraft and friendly vehicles

Ordering information

Features	Standard	Professional	Enterprise
Create event-to-actions based on events reported by tracking systems.	Yes	Yes	Yes
Create RSA zones on maps, arm and disarm RSA zones from maps, use the RSA zone widget.	No	Yes	Yes
Track targets on maps, add text description, acknowledge targets, use the RSA zone widget.	No	Yes	Yes
Enable automatic tracking so that the closest PTZ camera follows the target, and when the target moves out of camera's field of view, video from the next closest camera is displayed.	No	Yes	Yes
Fuse targets manually	No	Yes	Yes
Generate RSA Investigation reports	No	Yes	Yes
Use Genetec Mission Control to respond to intrusions detected by RSA tracking systems from the incident Manager role.	No	Yes	Yes
Replay target paths on maps in the RSA investigation report.	No	Yes	Yes
Enable automatic fusion of targets.	No	Yes	Yes

The above table summarizes the list of features included in each RSA package. Federation support for RSA will be part of future releases.

Genetec Inc. [genetec.com/locations](https://www.genetec.com/locations)
 info@genetec.com
 @genetec