

COMAV

www.comav-srl.com

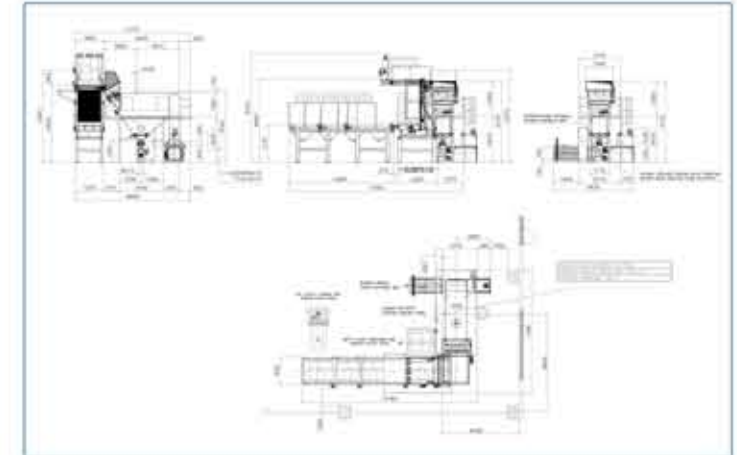
Bag Emptying Machine Projects Book /

SVR DEPA	4
SVR COMPACT	14
SVR METAL BARRELL	16
SVR NT	18
SVR EL	24
CASE STUDY	29



SVR Depa Project 1

SVR DEPA DEPALLETIZER



TECHNICAL NOTES

SCOPE OF SUPPLY: *filling several silos*

CUSTOMER'S NEED: *pallet loading at 90°*

FLOWRATE: *22 tons/h*

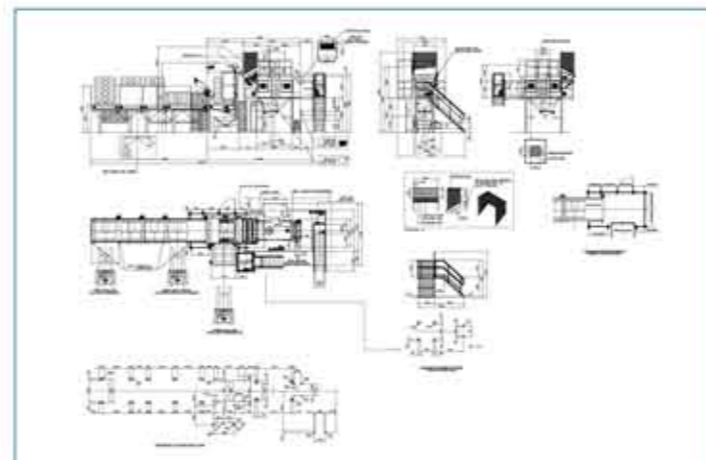
MATERIAL: *several kind of plastic granules*

KIND OF BAG: *plastic*

MATERIAL SUPPLIED: *on pallet with strong glue every hand*

EQUIPMENT: *SVR DEPA with hydraulic baler*

SVR Depa Project 2



TECHNICAL NOTES

SCOPE OF SUPPLY: filling silos

CUSTOMER'S NEED: high security level, partial discharging, easy removing of full pallet, stressful condition

FLOWRATE: 10 tons/h

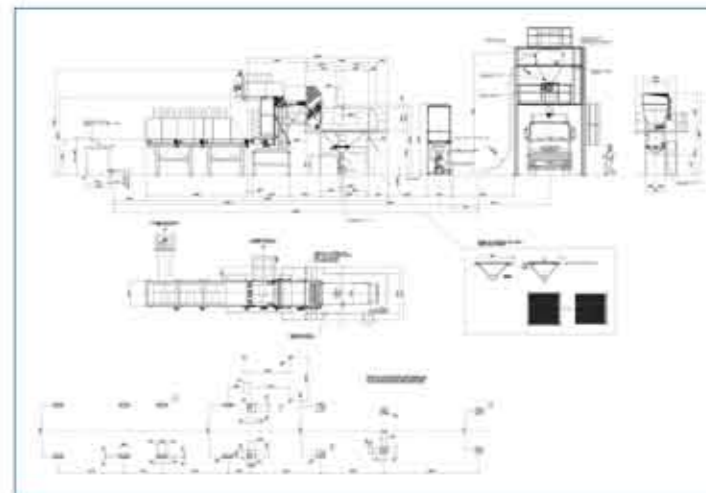
MATERIAL: PP and general plastic granule

KIND OF BAG: plastic

MATERIAL SUPPLIED: on pallet

EQUIPMENT: SVR 600 with special depalletizer and safety equipment designed in according to SIL2 Pl d

SVR Depa Project 3



TECHNICAL NOTES

SCOPE OF SUPPLY: filling truck

CUSTOMER'S NEED: filling less than 1 hour and 45 minutes, any empty bag residual after the cutting

FLOWRATE: 20 tons/h

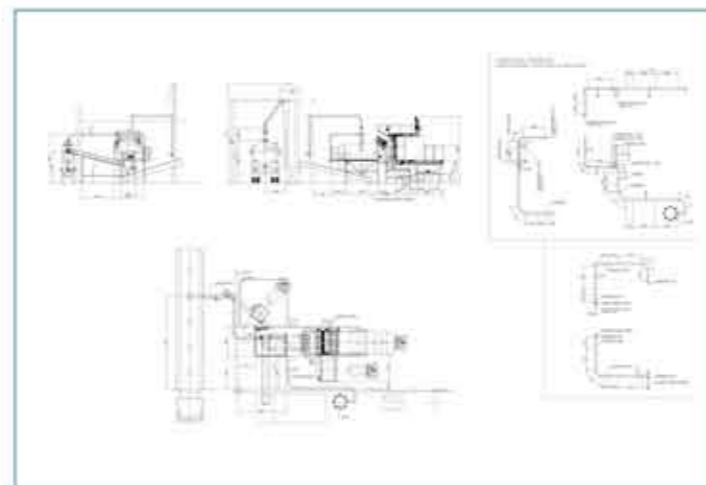
MATERIAL: various plastic granule

KIND OF BAG: plastic

MATERIAL SUPPLIED: on pallet

EQUIPMENT: SVR 1000 complete of depalletizer, empty stacker and full pallet unit

SVR Depa Project 4



TECHNICAL NOTES

SCOPE OF SUPPLY: *filling tanks*

CUSTOMER'S NEED: *long life for blade, robust execution, ATEX Version*

FLOWRATE: *10 tons/h*

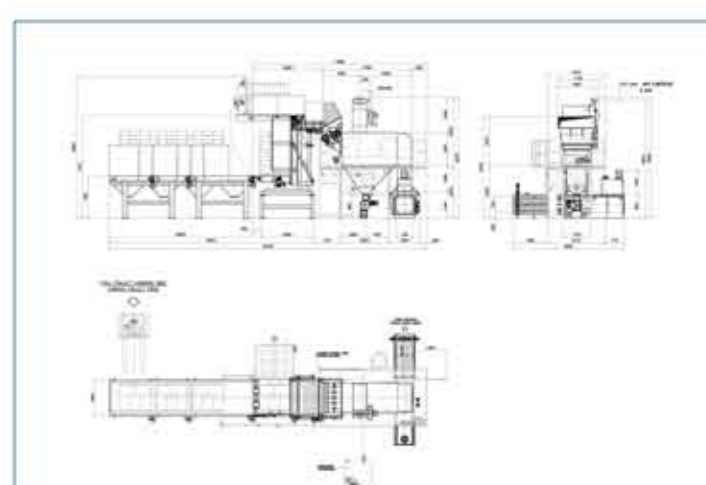
MATERIAL: *coffee beans*

KIND OF BAG: *raffa*

MATERIAL SUPPLIED: *on large pallet*

EQUIPMENT: *Special SVR 600 with larger depalletizer and special cutting section*

SVR Depa Project 5



TECHNICAL NOTES

SCOPE OF SUPPLY: *filling silos*

CUSTOMER'S NEED: *high throughput, minimal maintenance, easy integration to their system*

FLOWRATE: *25 tons/h*

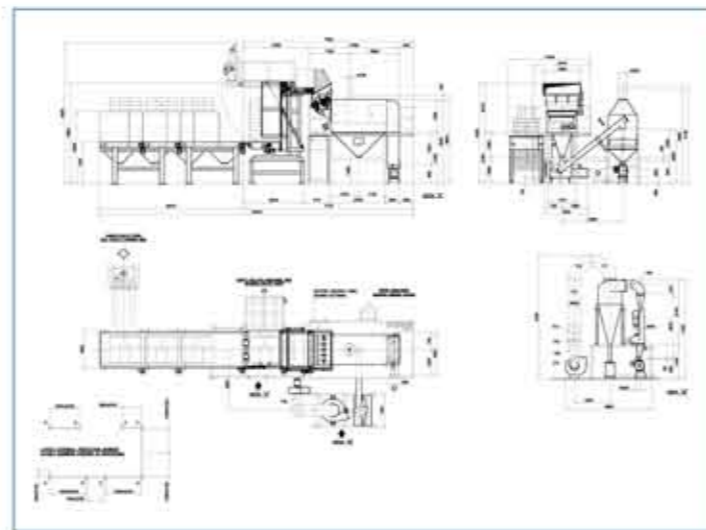
MATERIAL: *various plastic granule*

KIND OF BAG: *plastic*

MATERIAL SUPPLIED: *on pallet*

EQUIPMENT: *SVR 1000 with hydraulic press and accessories for pneumatic conveying*

SVR Depa Project 6



TECHNICAL NOTES

SCOPE OF SUPPLY: *filling truck*

CUSTOMER'S NEED: *any empty bag residual after the discharge, high throughput, low maintenance*

FLOWRATE: *20 tons/h*

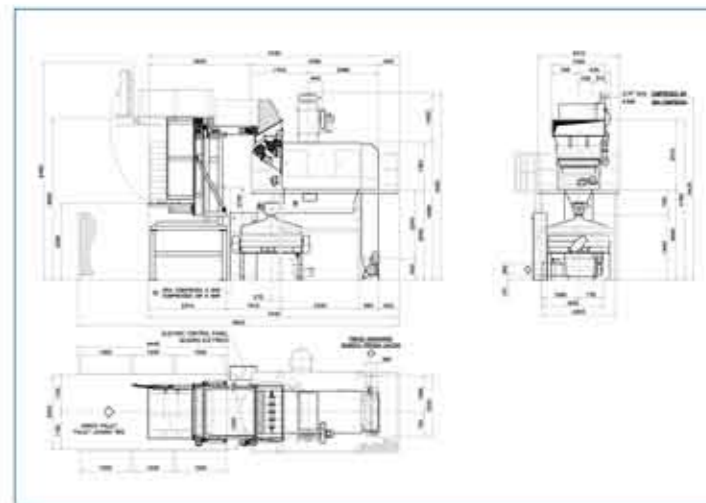
MATERIAL: *various plastic granule*

KIND OF BAG: *plastic*

MATERIAL SUPPLIED: *on pallet*

EQUIPMENT: *SVR 1000 with depalletizer, deduster, various accessories*

SVR Depa Project 7



TECHNICAL NOTES

SCOPE OF SUPPLY: *filling silos*

CUSTOMER'S NEED: *labor saving, optimize the recycling and its saving, ergonomic handling*

FLOWRATE: *10 tons/h*

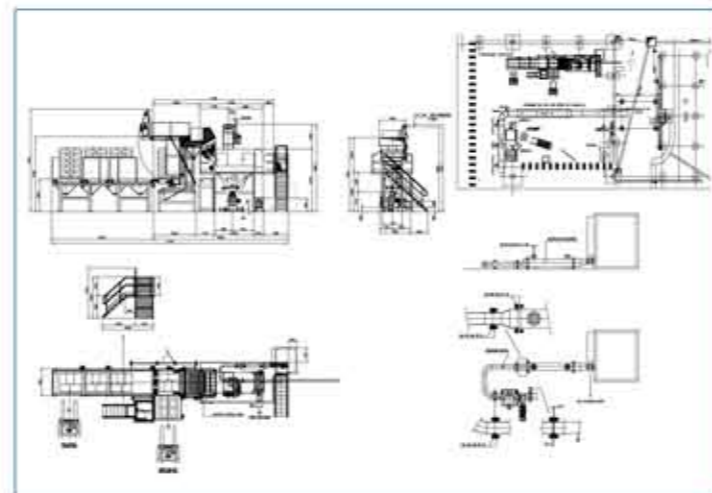
MATERIAL: *Gypsum*

KIND OF BAG: *paper*

MATERIAL SUPPLIED: *On pallet*

EQUIPMENT: *SVR 600 Depalletizer complete of filtering unit and sifter*

SVR Depa Project 8



TECHNICAL NOTES

SCOPE OF SUPPLY: *filling silos*

CUSTOMER'S NEED: *labor saving, high throughput, robust execution, low maintenance, high technology*

FLOWRATE: *15 tons/h*

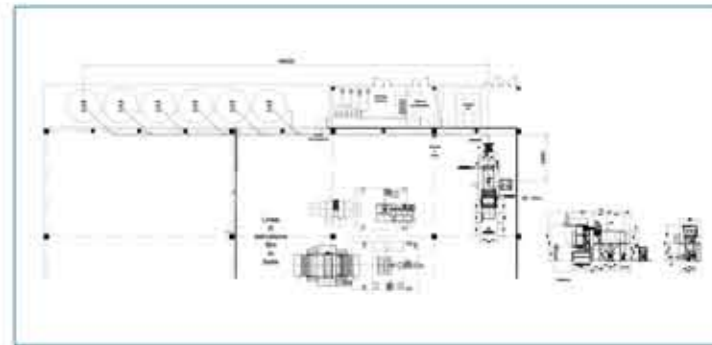
MATERIAL: *PS, GPPS, HIPS granule*

KIND OF BAG: *plastic*

MATERIAL SUPPLIED: *on pallet*

EQUIPMENT: *SVR 600 depalletizer complete of accessories for pneumatic conveying*

SVR Depa Project 9



TECHNICAL NOTES

SCOPE OF SUPPLY: *filling silos*

CUSTOMER'S NEED: *automatic loading, easy working, robust version*

FLOWRATE: *10 tons/h*

MATERIAL: *plastic granule*

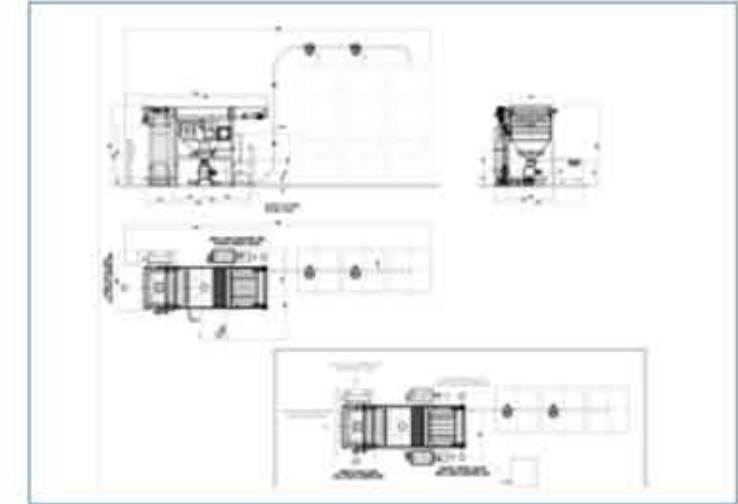
KIND OF BAG: *plastic and paper*

MATERIAL SUPPLIED: *on pallet with glue and without*

EQUIPMENT: *SVR 600 depalletizer*

SVR Compact Project 1

SVR COMPACT NEEDLES PICKING



TECHNICAL NOTES

SCOPE OF SUPPLY: *filling trevira silo*

CUSTOMER'S NEED: *fast discharge, easy integration, robust execution*

FLOWRATE: *15 tons/h*

MATERIAL: *: PP, PE*

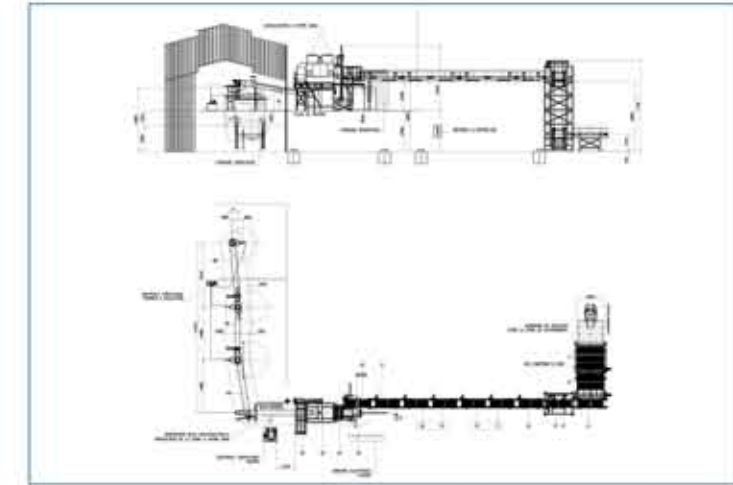
KIND OF BAG: *plastic, laminated paper*

MATERIAL SUPPLIED: *on pallet*

EQUIPMENT: *SVR COMPACT and accessories for pneumatic conveying*

SVR Metal Barrell Project 1

SVR METAL BARRELL



TECHNICAL NOTES

SCOPE OF SUPPLY: *filling tank*

CUSTOMER'S NEED: *cutting metal barrel, reduce the work accidents, avoid any stiching effect*

CAPACITY: *20 barrel/hour, each barrel 200 Kg*

MATERIAL: *rosin*

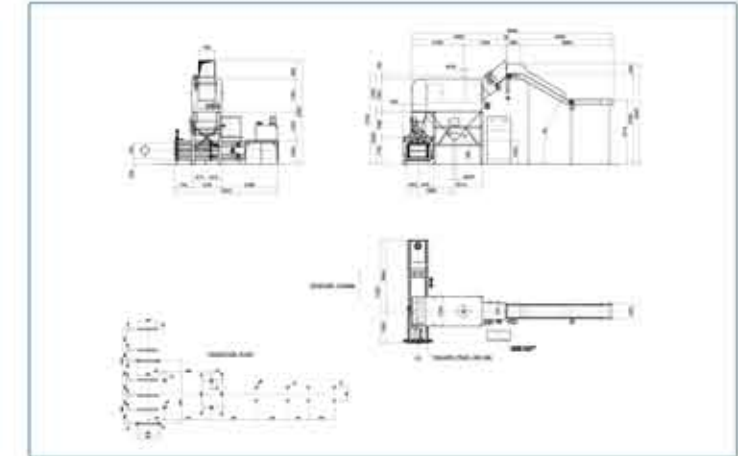
KIND OF BARREL: *metal*

MATERIAL SUPPLIED: *free barrel*

EQUIPMENT: *special bag emptying machine
bespoke design including a cooling system for
several part of equipment and its accessories such
as screw conveyor*

SVR NT Project 1

SVR NT BELT CONVEYOR



TECHNICAL NOTES

SCOPE OF SUPPLY: *filling silos*

CUSTOMER'S NEED: *minimal damage on shell of the seed*

FLOWRATE: *10 tons/h*

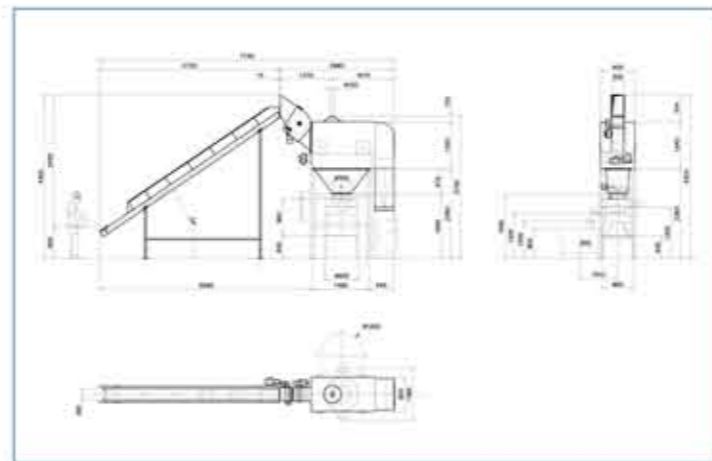
MATERIAL: *various seeds*

KIND OF BAG: *paper*

MATERIAL SUPPLIED: *on pallet*

EQUIPMENT: *SVR 600 with belt conveyor and special Tilting&Lifting Board*

SVR NT Project 2



TECHNICAL NOTES

SCOPE OF SUPPLY: coffee recycling

CUSTOMER'S NEED: recover coffee wrapping

FLOWRATE: 1 tons/h

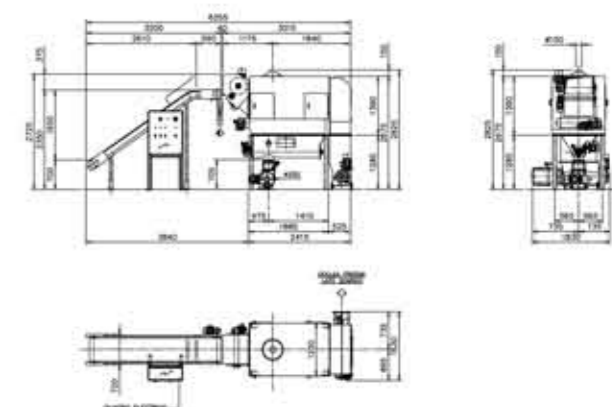
MATERIAL: coffee powder

KIND OF WRAPPING: from 1 to 5 Kg

MATERIAL SUPPLIED: free bag

EQUIPMENT: special SVR150 with belt conveyor

SVR NT Project 3



TECHNICAL NOTES

SCOPE OF SUPPLY: filling silos

CUSTOMER'S NEED: limited available space but request high throughput, easy working, no residual inside machine, easy cleaning

FLOWRATE: 9 tons/h

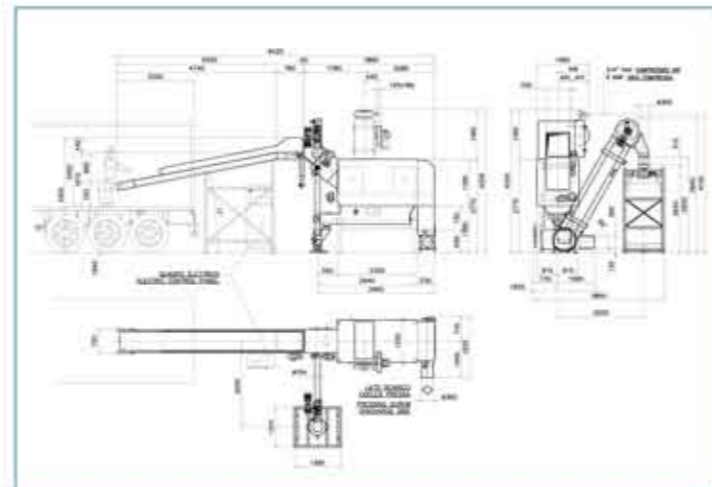
MATERIAL: plastic granule with different colors

KIND OF BAG: plastic

MATERIAL SUPPLIED: free bag

EQUIPMENT: SVR 300 with belt conveyor and special design for easy cleaning

SVR NT Project 4



TECHNICAL NOTES

SCOPE OF SUPPLY: filling big bag

CUSTOMER'S NEED: direct loading by truck trough belt conveyor, atex execution

FLOWRATE: 10 tons/h

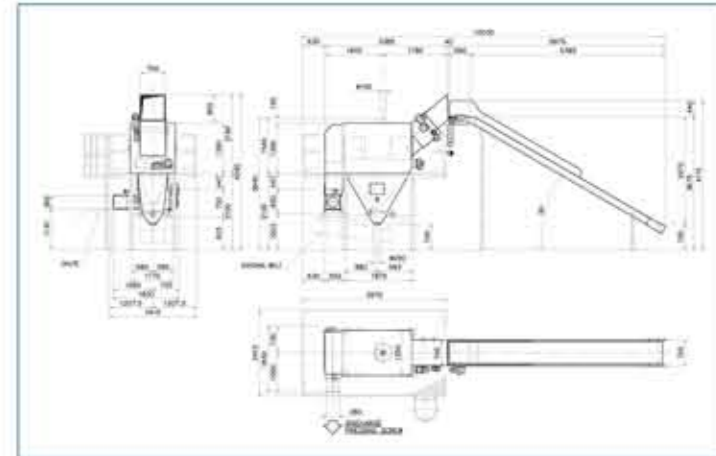
MATERIAL: sugar

KIND OF BAG: paper/plastic

MATERIAL SUPPLIED: free bag

EQUIPMENT: SVR 600 with special belt conveyor, mechanical conveyor and FIBC

SVR NT Project 5



TECHNICAL NOTES

SCOPE OF SUPPLY: filling silos

CUSTOMER'S NEED: minimal damage on material, low maintenance, long-life blade, high emptying coefficient

FLOWRATE: 10 tons/h

MATERIAL: various seeds

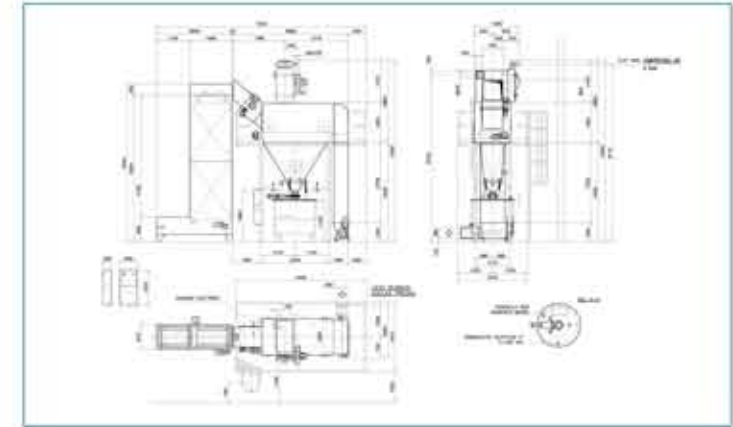
KIND OF BAG: paper with different dimensions and filling per bag

MATERIAL SUPPLIED: free pallet

EQUIPMENT: SVR 600 with belt conveyor

SVR EL Project 1

SVR EL
ELEVATOR



TECHNICAL NOTES

SCOPE OF SUPPLY: *discharge to underneath mixer tank*

CUSTOMER'S NEED: *special discharge and cover, tight seal during the discharge, ATEX version, movable mixer tank*

FLOWRATE: *4 tons/h*

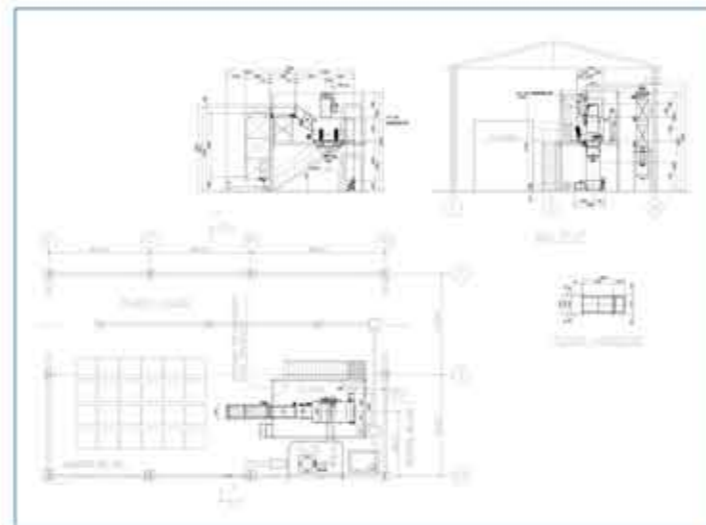
MATERIAL: *various fine powder*

KIND OF BAG: *plastic/paper*

MATERIAL SUPPLIED: *free bag*

EQUIPMENT: *SVR 300 with elevator and special cover*

SVR EL Project 2



TECHNICAL NOTES

SCOPE OF SUPPLY: *filling tanks*

CUSTOMER'S NEED: *explosion proof version, any dispersion after the cutting/discharge*

FLOWRATE: *5 tons/h*

MATERIAL: *various chemical additives*

KIND OF BAG: *plastic/paper*

MATERIAL SUPPLIED: *free bag*

EQUIPMENT: *SVR 300 with elevator and suppressor*

SVR EL Project 3



TECHNICAL NOTES

SCOPE OF SUPPLY: *filling tanks*

CUSTOMER'S NEED: *any dust dispersion, compatible version in food grade, minimal inner residual*

FLOWRATE: *2 tons/h*

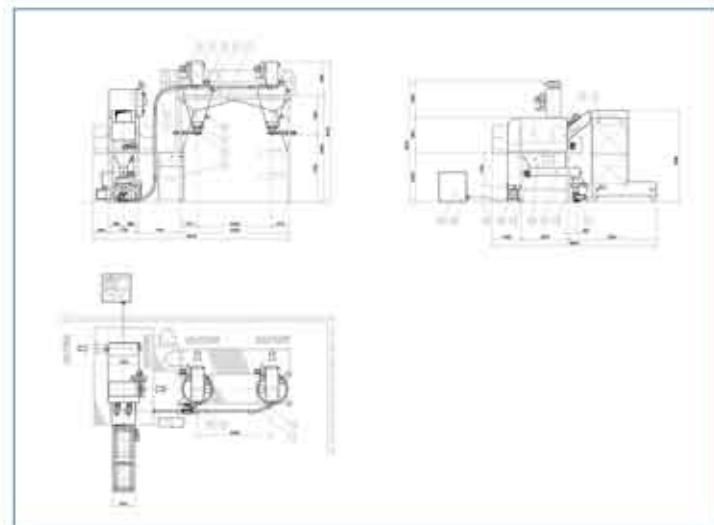
MATERIAL: *diatomaceous earth*

KIND OF BAG: *20-22-25 kg paper*

MATERIAL SUPPLIED: *free bag*

EQUIPMENT: *SVR 300 with elevator*

SVR EL Project 4



TECHNICAL NOTES

SCOPE OF SUPPLY: *filling mixer*

CUSTOMER'S NEED: *optimization of available space,
zero dispersion of material during the discharging*

FLOWRATE: *8 tons/h*

MATERIAL: *talc, PVC resin, calcium carbonate*

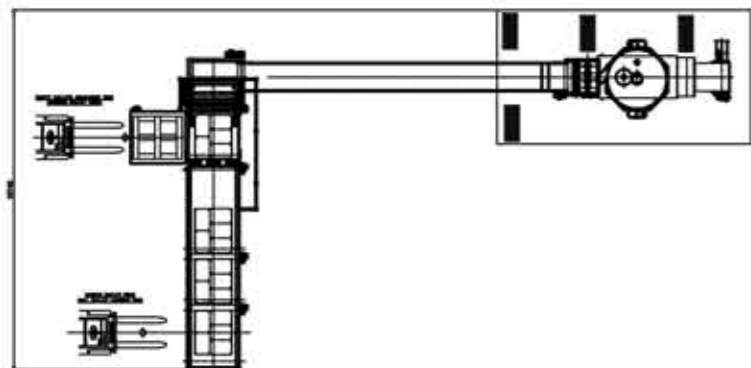
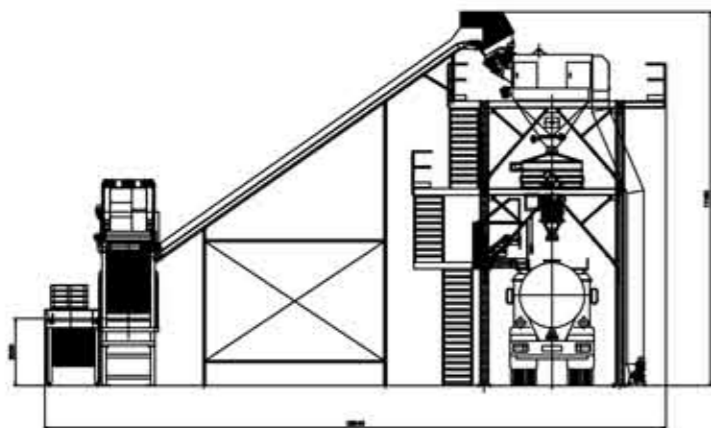
KIND OF BAG: *paper*

MATERIAL SUPPLIED: *free bag*

EQUIPMENT: *SVR 600 with elevator and filter*

Case Study

Case Study 1



TECHNICAL NOTES

SCOPE OF SUPPLY: filling truck by gravity

CUSTOMER'S NEED: any empty bag residual after the discharge, saving labor cost, low maintenance

FLOWRATE: 20 tons/h

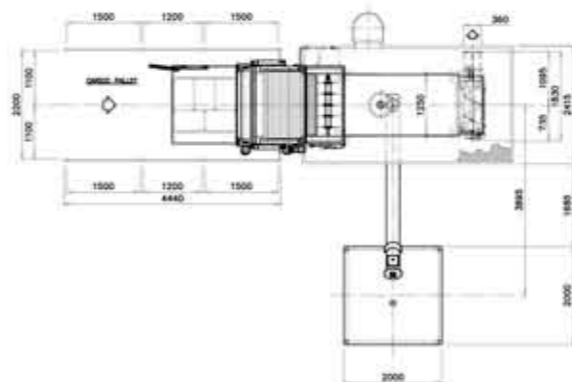
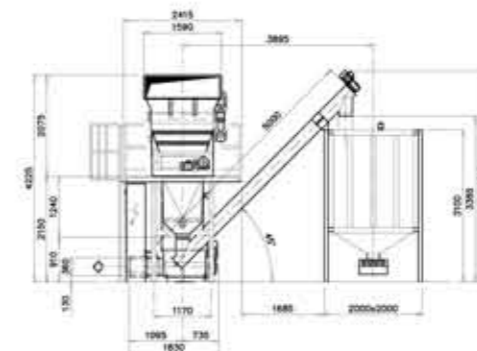
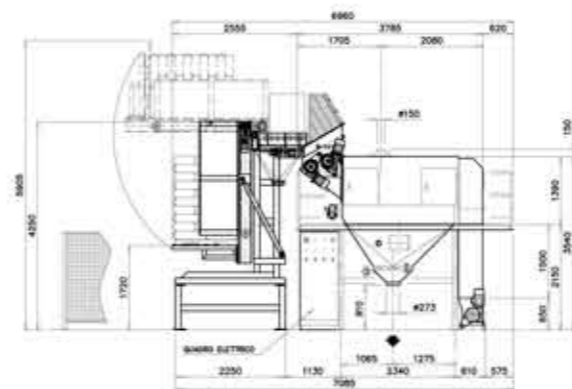
MATERIAL: resin PVC

KIND OF BAG: plastic, paper

MATERIAL SUPPLIED: on pallet

EQUIPMENT: SVR 1000 with depalletizer and accessories to discharge by gravity

Case Study 2



TECHNICAL NOTES

SCOPE OF SUPPLY: filling trevira silo by bag emptying machine with screw conveyor
CUSTOMER'S NEED: saving labor cost, robust execution

FLOWRATE: 10 tons/h

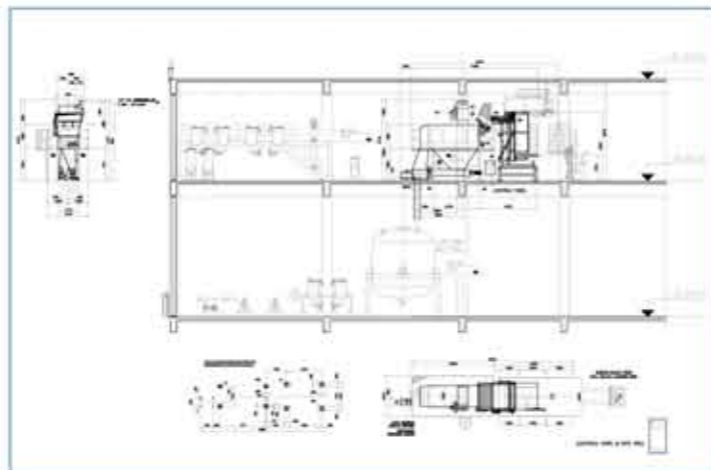
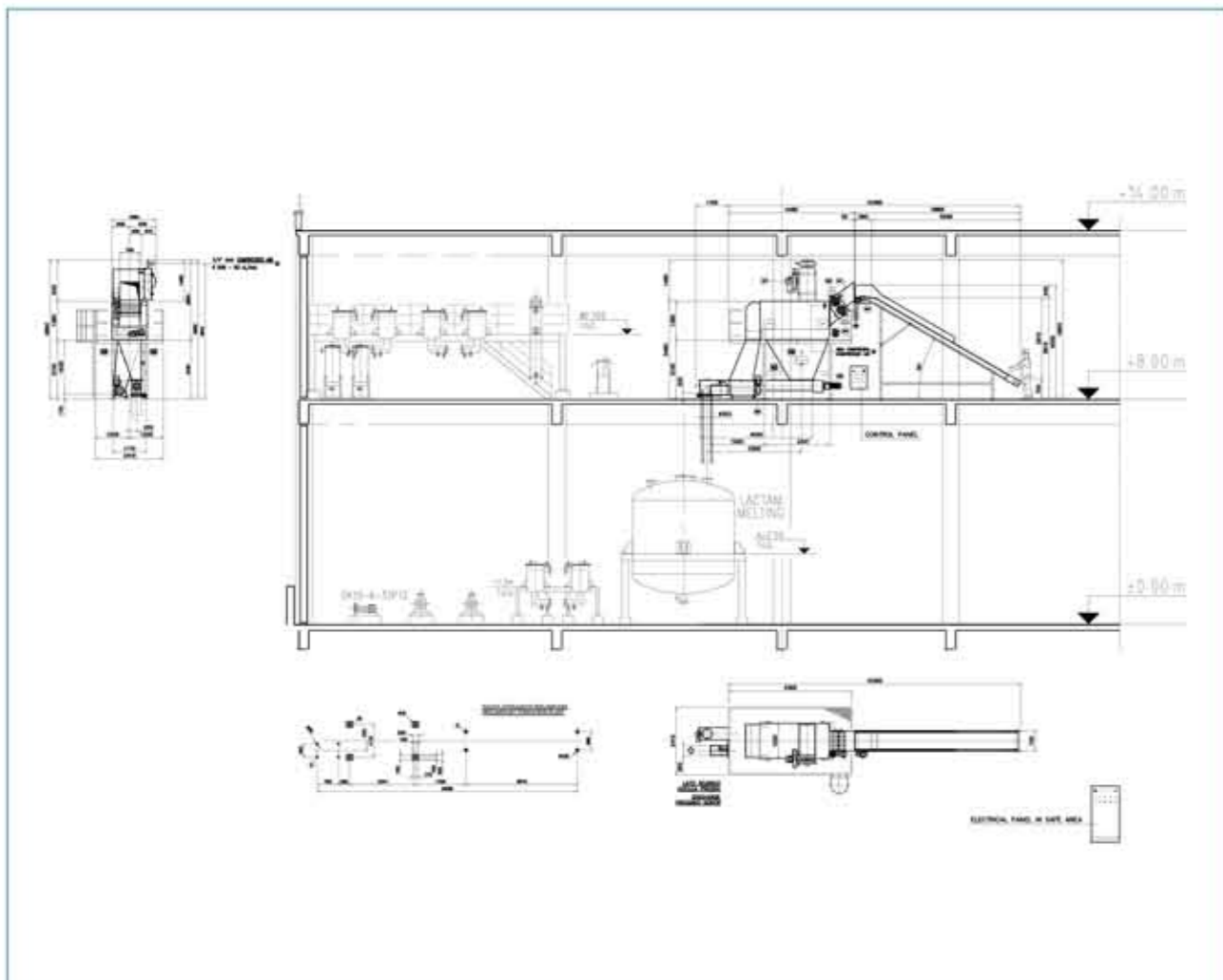
MATERIAL: PP, PE, HPDE, LDPE

KIND OF BAG: plastic, paper

MATERIAL SUPPLIED: on pallet

EQUIPMENT: SVR 600 with depalletizer, trevira silo, screw conveyor accessories for pneumatic conveying

Case Study 3



TECHNICAL NOTES

SCOPE OF SUPPLY: filling tank

CUSTOMER'S NEED: breaking a tough mono-block bag

FLOWRATE: 12 tons/h

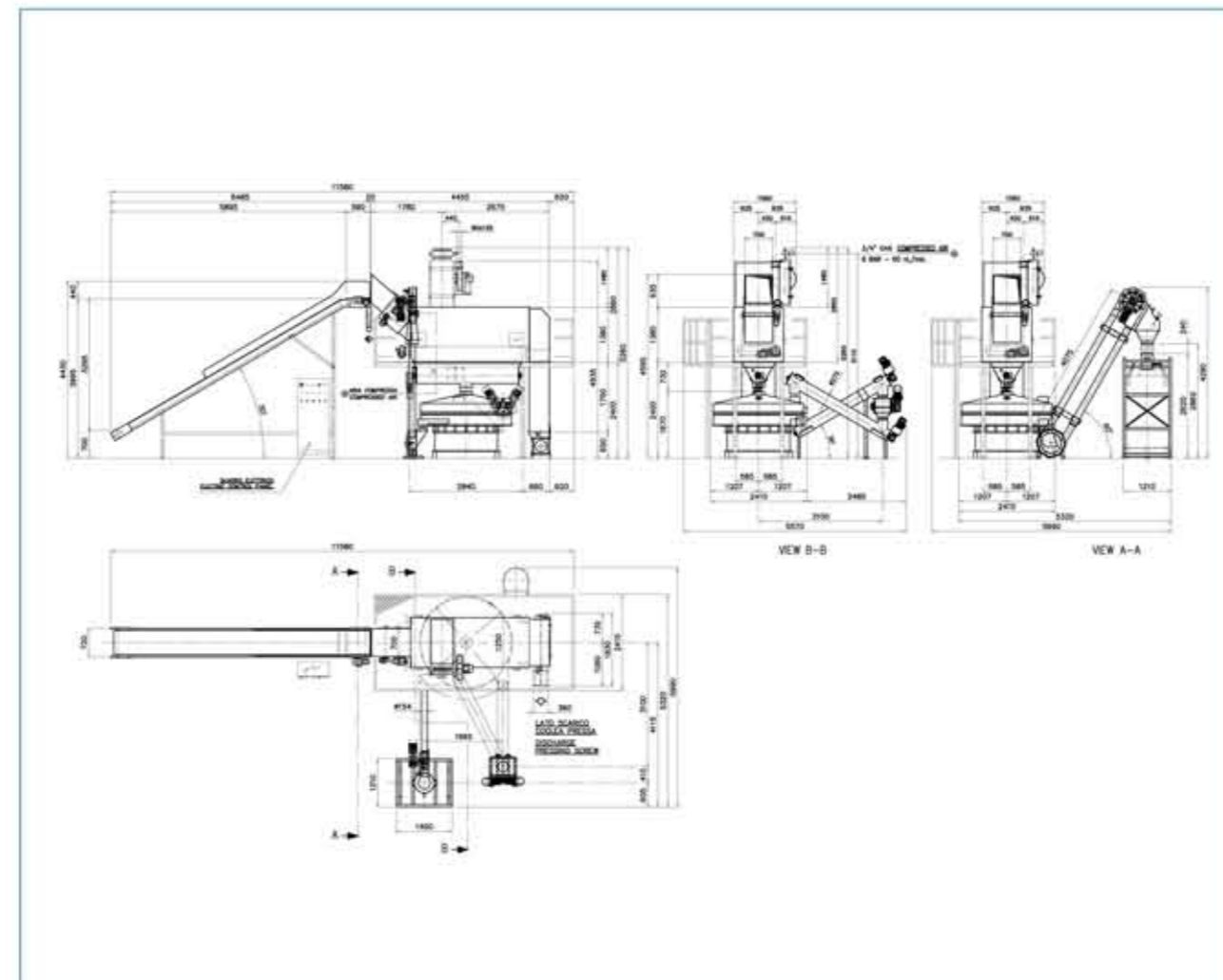
MATERIAL: caprolactam

KIND OF BAG: plastic

MATERIAL SUPPLIED: on pallet and free bag

EQUIPMENT: special SVR600 with special cutting section, fed by belt conveyor and depalletizer

Case Study 4



TECHNICAL NOTES

SCOPE OF SUPPLY: filling big bag by bag emptying machine with aero conveyor

CUSTOMER'S NEED: ATEX Version, any residual of empty bag, any dust loss, granulometric selection

FLOWRATE: 12 tons/h

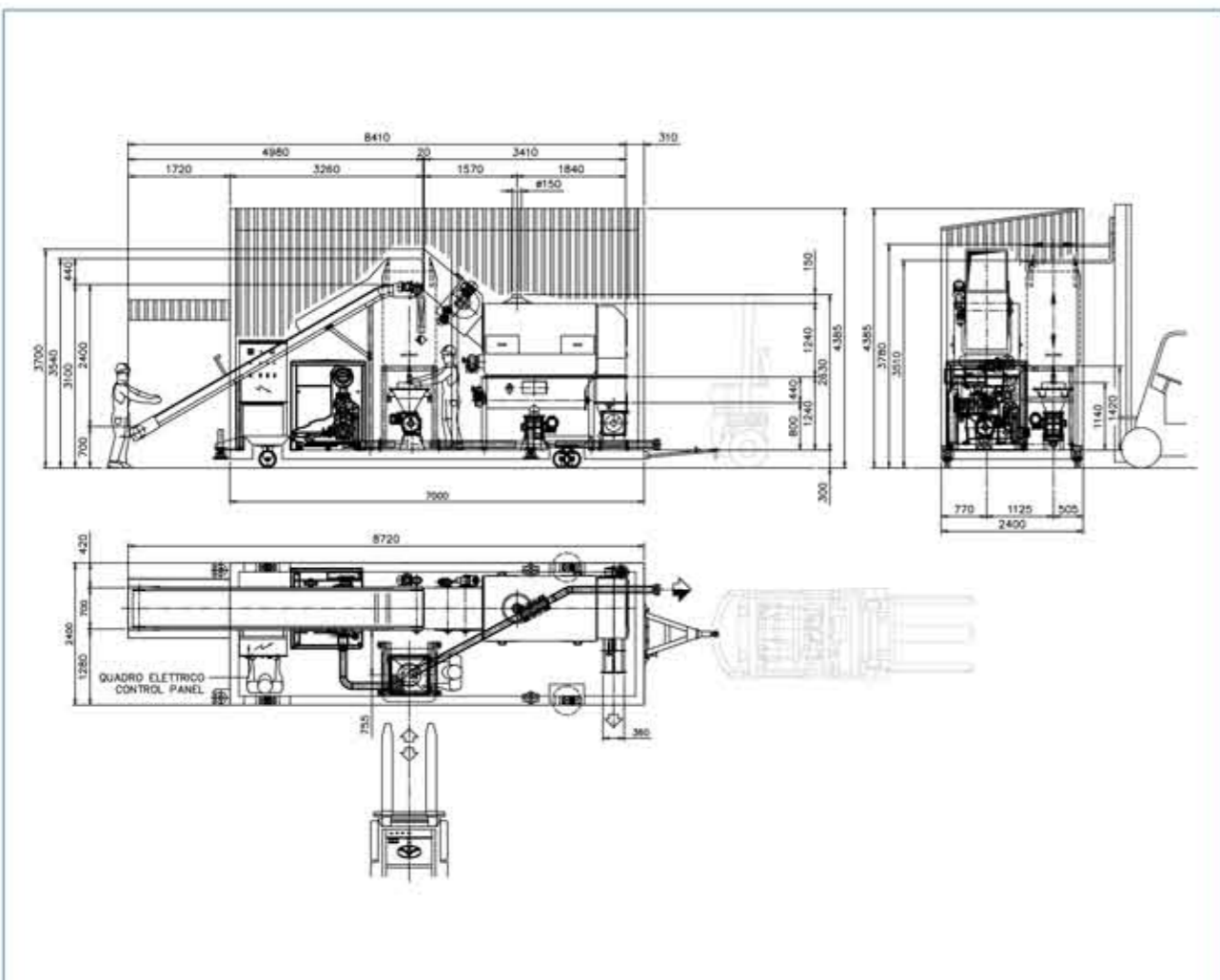
MATERIAL: sugar

KIND OF BAG: paper

MATERIAL SUPPLIED: on pallet

EQUIPMENT: SVR 600 with depalletizer, sifter, aero conveyor, FIBC

Case Study 5



TECHNICAL NOTES

SCOPE OF SUPPLY: *filling silos*

CUSTOMER'S NEED: *movable version, integrated big bag*

FLOWRATE: *8 tons/h*

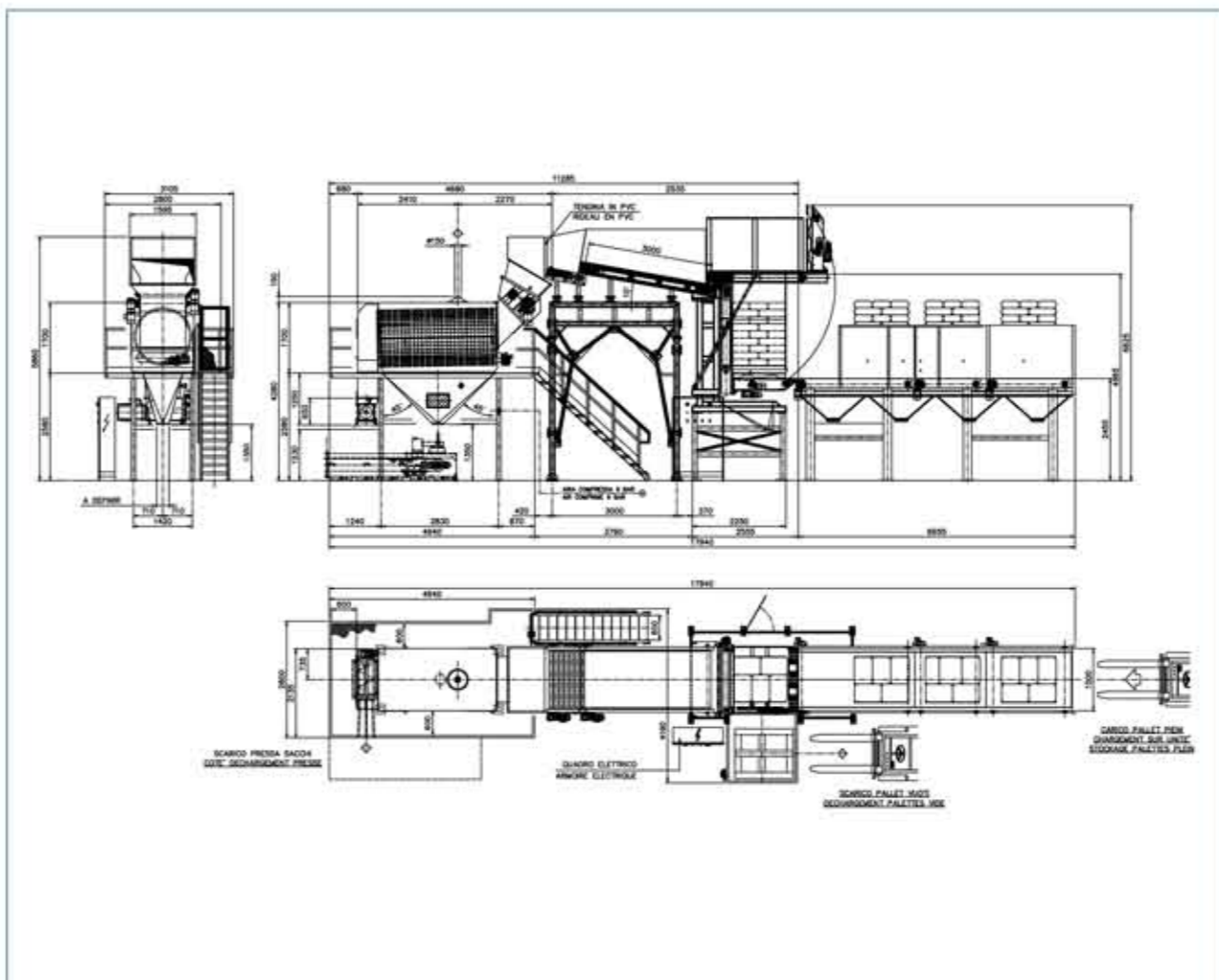
MATERIAL: *plastic granule PP, PS, ABS*

KIND OF BAG: *plastic*

MATERIAL SUPPLIED: *free bag*

EQUIPMENT: *SVR 300 movable version and accessories for pneumatic conveying*

Case Study 6



TECHNICAL NOTES

SCOPE OF SUPPLY: *filling silos*

CUSTOMER'S NEED: *high flowrate, long life of blade, saving labor activity, any dispersion of dust and pesticide, high emptying coefficient, high efficiency also with partial filling per bag*

FLOWRATE: *37 tons/h*

MATERIAL: *various seeds*

KIND OF BAG: *paper and several size from 5 to 25 kg*

MATERIAL SUPPLIED: *on pallet*

EQUIPMENT: *special SVR 1000 with depalletizer and relative accessories*



Your Partner in Bulk Material since 1980

COMAV Srl
Via Statale, 337
44047 - Dosso (FE) - Italy

phone: +39 0532 848348
email: info@comav-srl.com
website: www.comav-srl.com